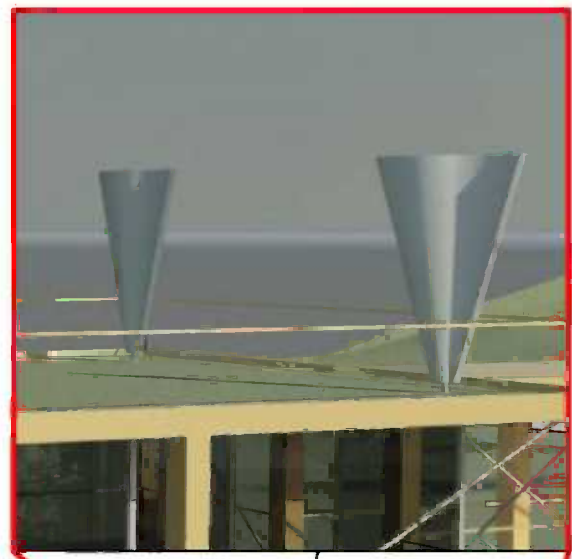
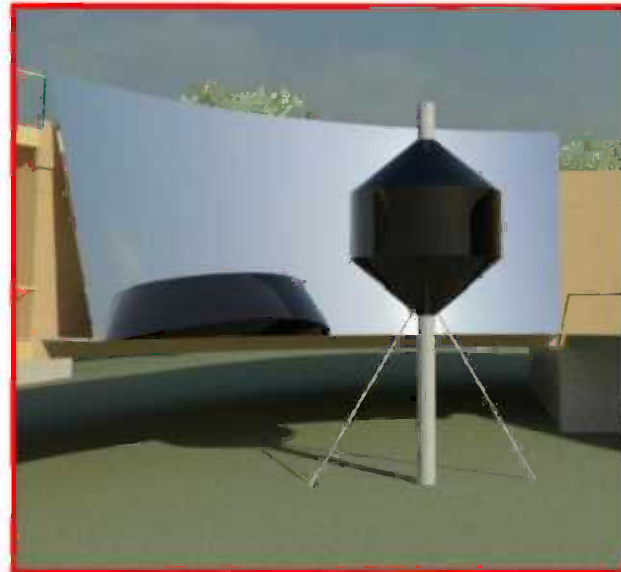




MEETING POINT 4 SANDBERG



Borders can connect
two lines shaped in contrast way
representing the borders
are joined in one space

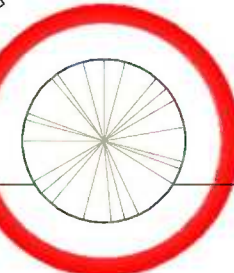


fire-the solar
column+mimors

relaxation-the room for
meditation, benches

exercise-hiking,
cycling

knowledge- the library,
the lecture room



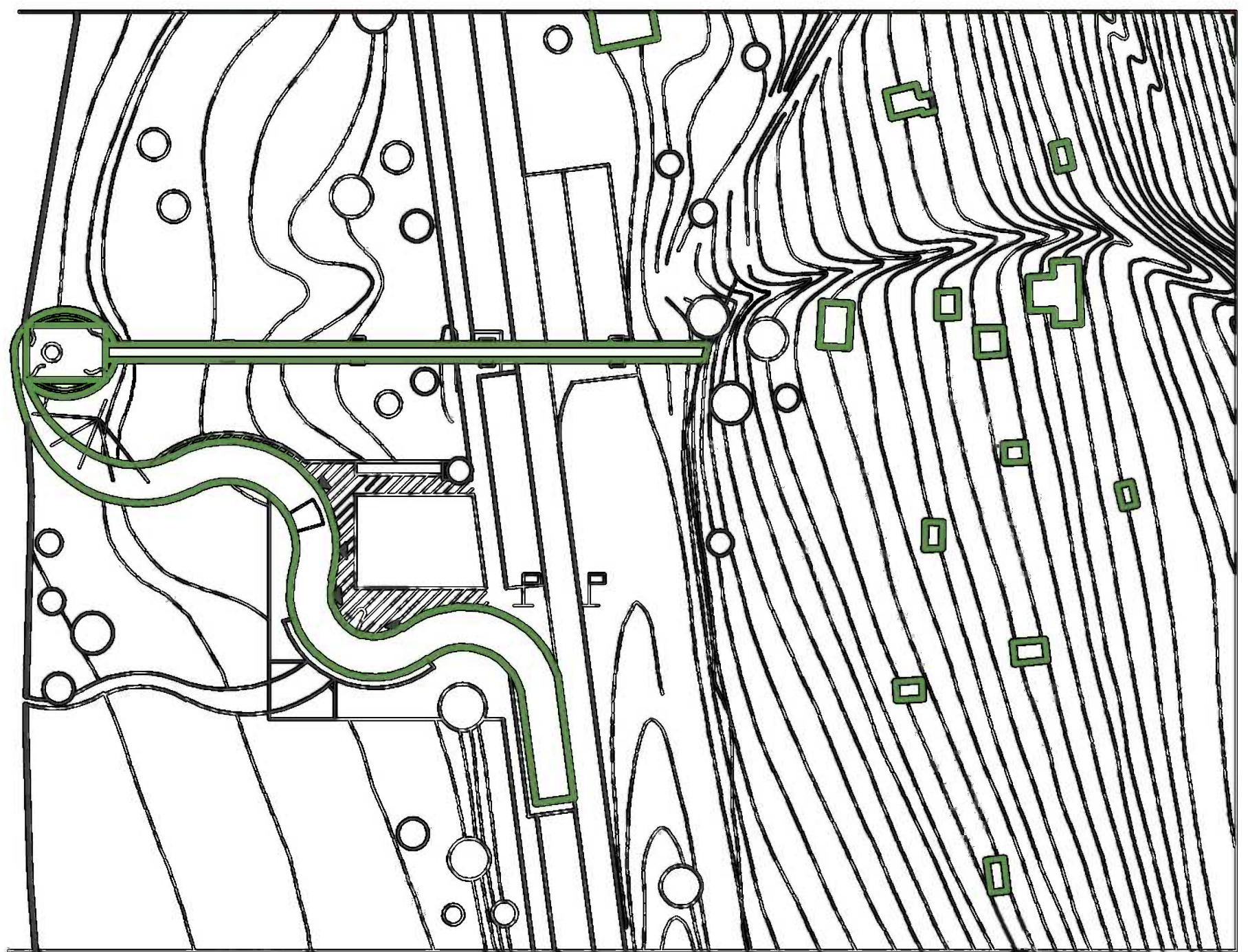
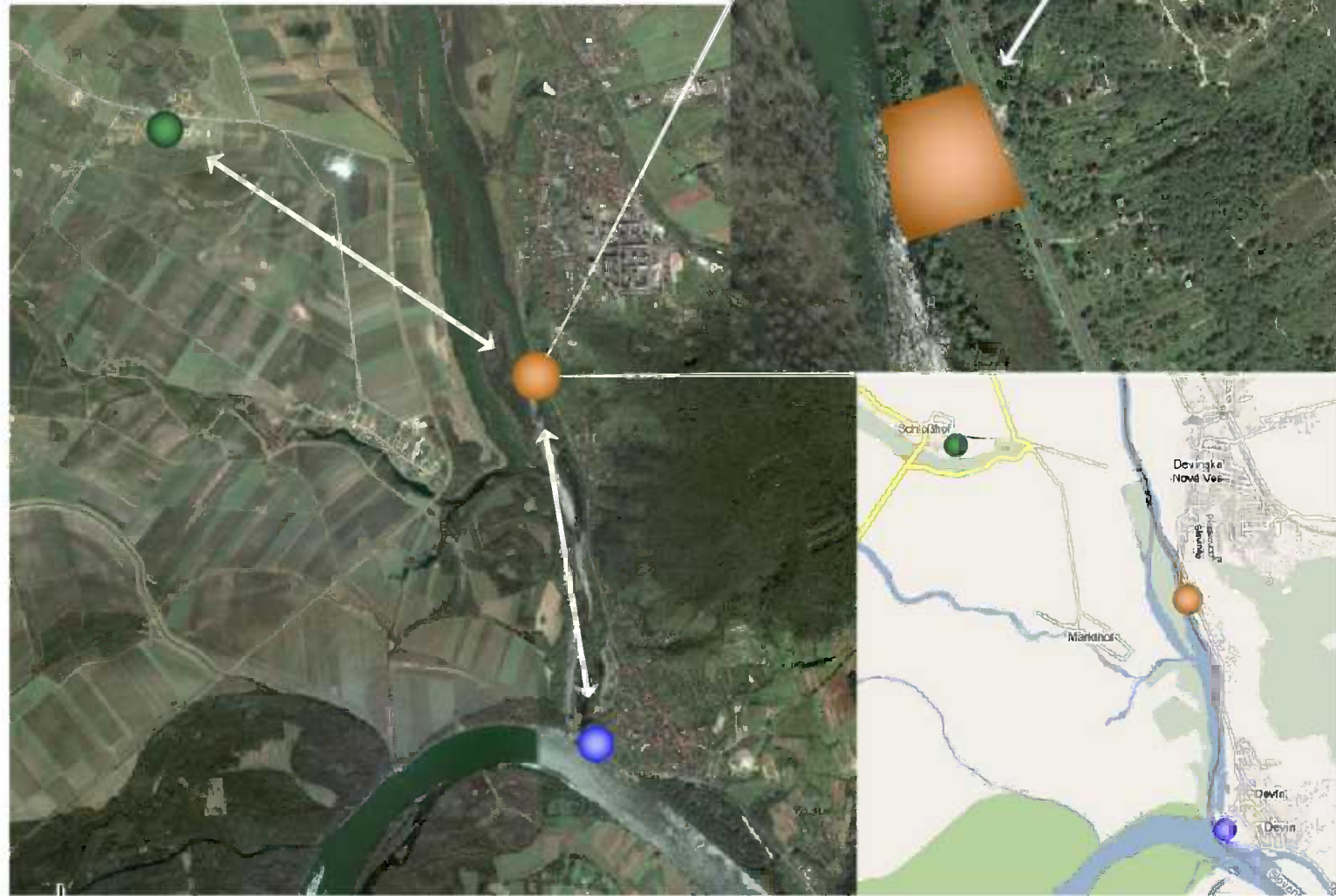
earth-the tree

Four pillars:

- 4 cardinal points
- 4 front doors
- 4 elements (earth, water, air, fire)
- 4 kinds of leisure time activities
(knowledge, exercise, culture, relaxation)

4 attractive localities for tourists

- Schlosshof
- The Devín castle
- Sandberg
- Meetingpoint



Site plan 1:1000



Before flood

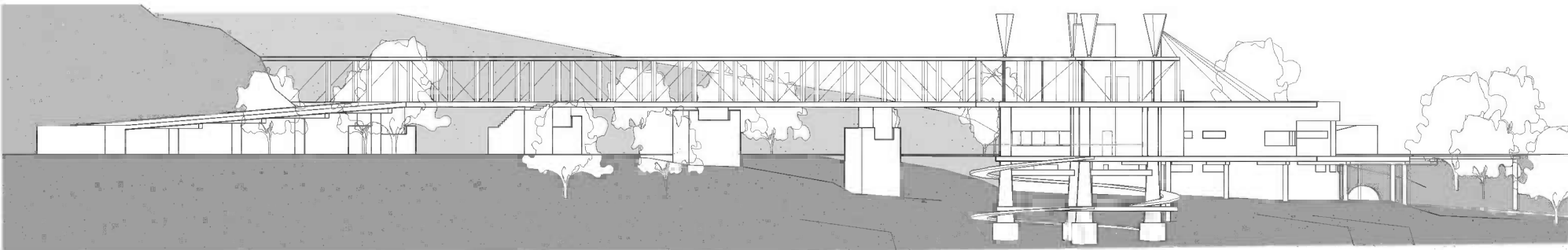


In flood-time

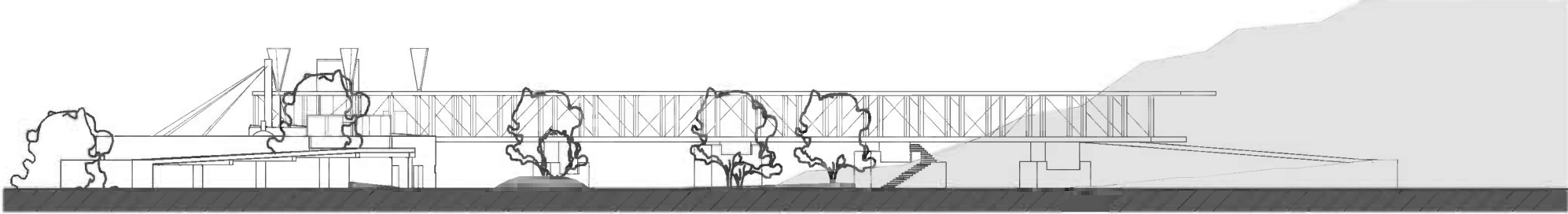




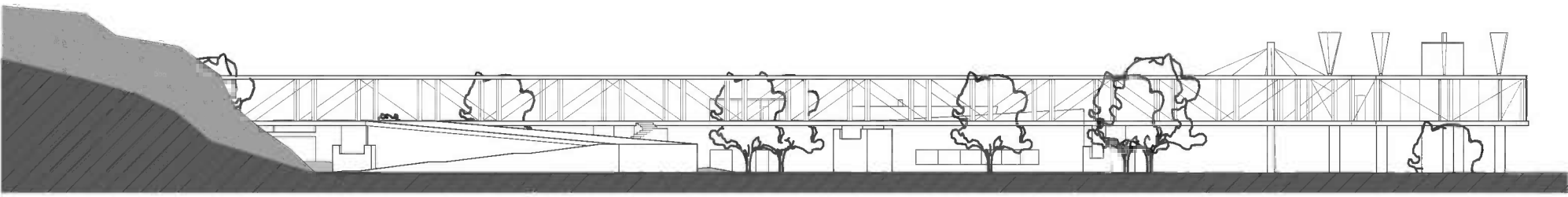
MEETING POINT 4 SANDBERG



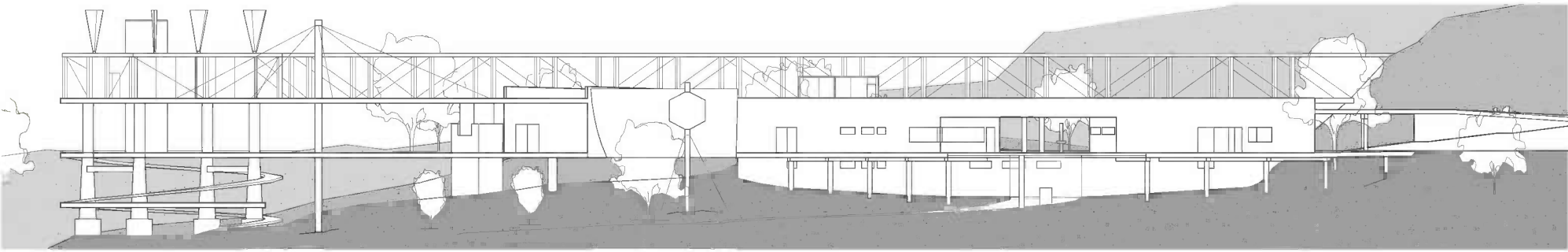
North-west elevation 1:500



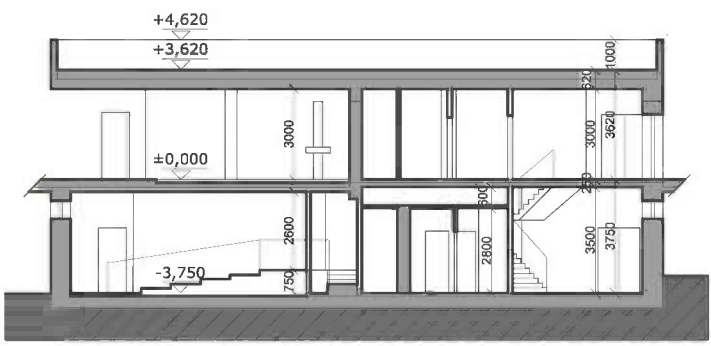
South-east elevation 1:500



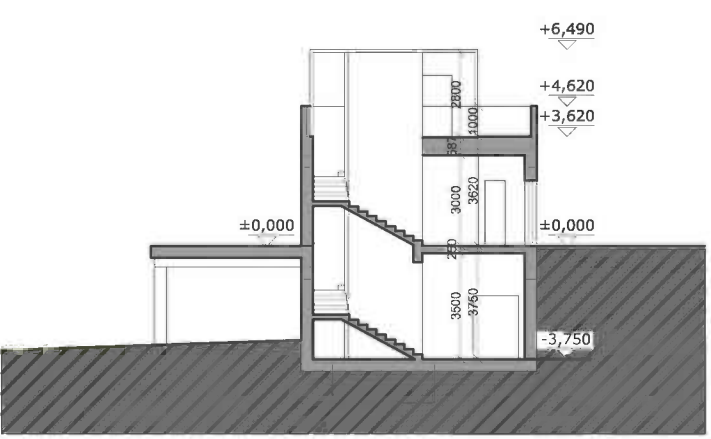
North-east elevation 1:500



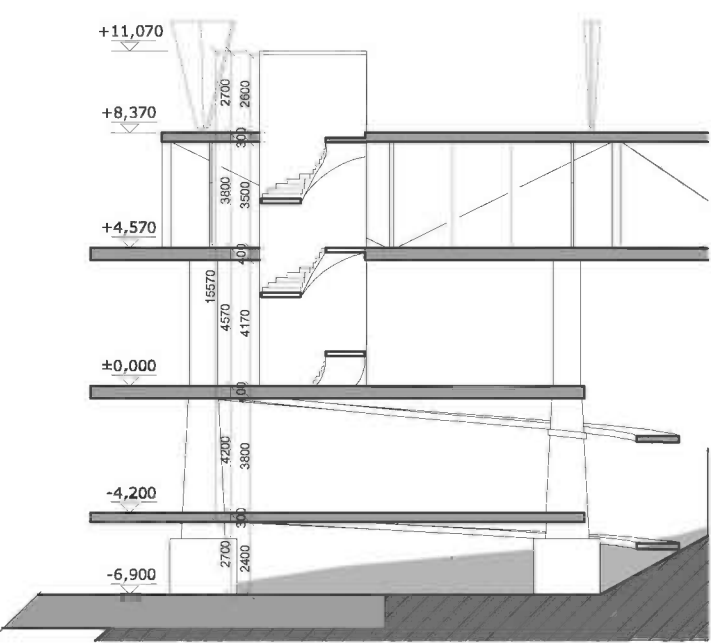
South-west elevation 1:500



Section A-A 1:250



Section B-B 1:250



Section C-C 1:250

The polyfunctional object is situated in the natural environment, with the historical values and its own identity. The public building should become the meetingpoint for people with various interests and hobbies.

First of all the project solves the problem of adaptation to overflowing activity of river Morava and also takes to consideration the necessity to preserve the valuable vegetation.

The terraces and ramps placed above the top level of water in flood - time together with trafficable roof offer the visitors the sufficient space to rest or do other various activities. They detach the original greenery from the new one (which can be used also during the flood).

The essential project's part is a creation of a space for relaxation both in the exterior and interior and use of near river Morava allowing to create a mole. It offers the opportunity to anchor small ships.

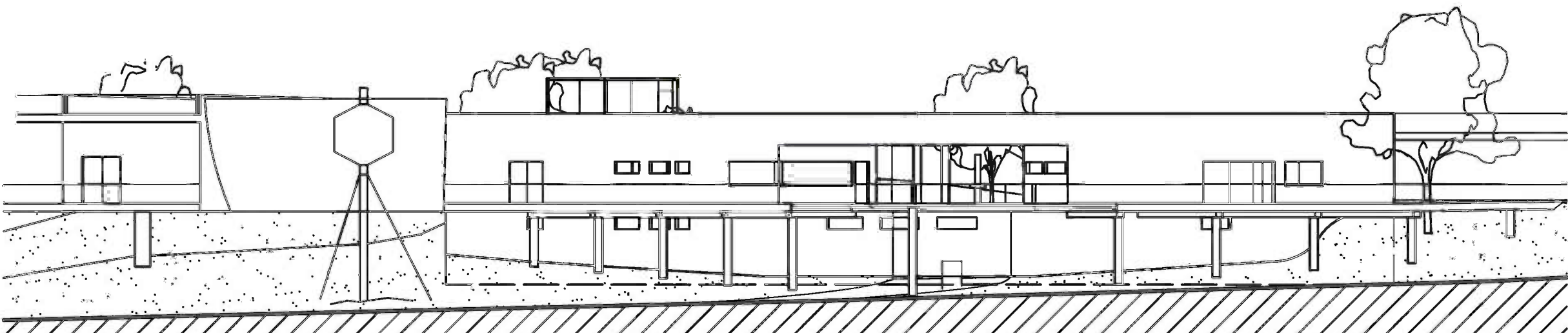
Important factor determining the object's features and character is the contact with many localities attractive for tourists situated in the vicinity and the cycle path crossing the area, too. There appears the endeavour to join the outside and the interior as much as possible.

From the point of view the ideological concept basic is the motive of a border (the border between Slovakia and Austria, countryside and urban, mainland and water, exterior and interior), the border that can not only divide, but also connect. This idea has influenced mainly the way of shaping the object. It is made of two lines (line representing the border) of different shapes, which are connected in the hinge point of the composition - by the last pillars of a former cableway - where are built many levels of terraces appropriate for sitting and having a rest.

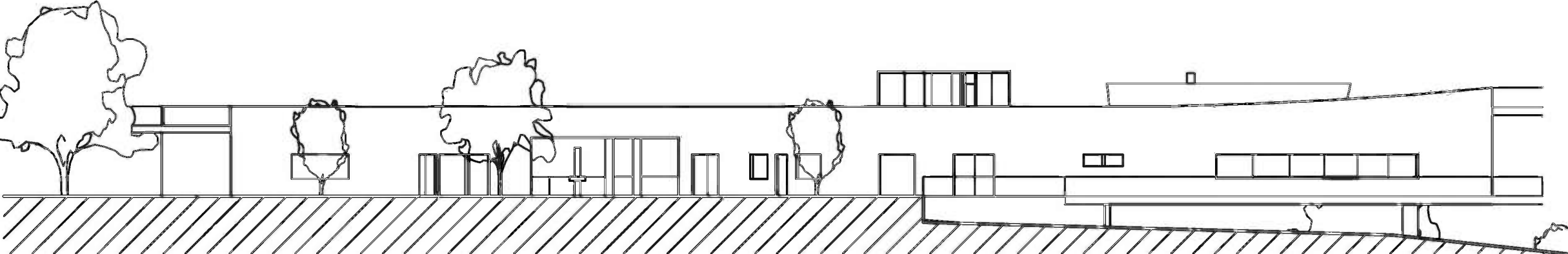
There has a place also the symbology of the number four: four pillars, four seasons, four elements... That is why this number has entered the project. It is represented by four front doors, four kinds of leisure time activities, four elements and possibilities how to use their energy and four isolated (but on the other hand patchable) parts of different functions.

To the basic functional parts of the building belong the room for organizing various social events with its subsidiary spaces, the public toilets, the snackbar with its storeroom and the eccentric's clubroom on the ground floor; then the library, the lecture hall, room for calm relaxation and space for storing and maintaining on the underground floor of curved part of the complex. There is also the object shaped in straight line including the foot bridge running over the road with the exposition (f.e. the pictures presenting the valuable fossils discovered in this locality, the protected unique kinds of plants or historical facts etc.) The foot bridge can continue up to the view on the Sandberg. Above the last pillars there is a close room for exposition and other lower levels for sitting and having a rest.

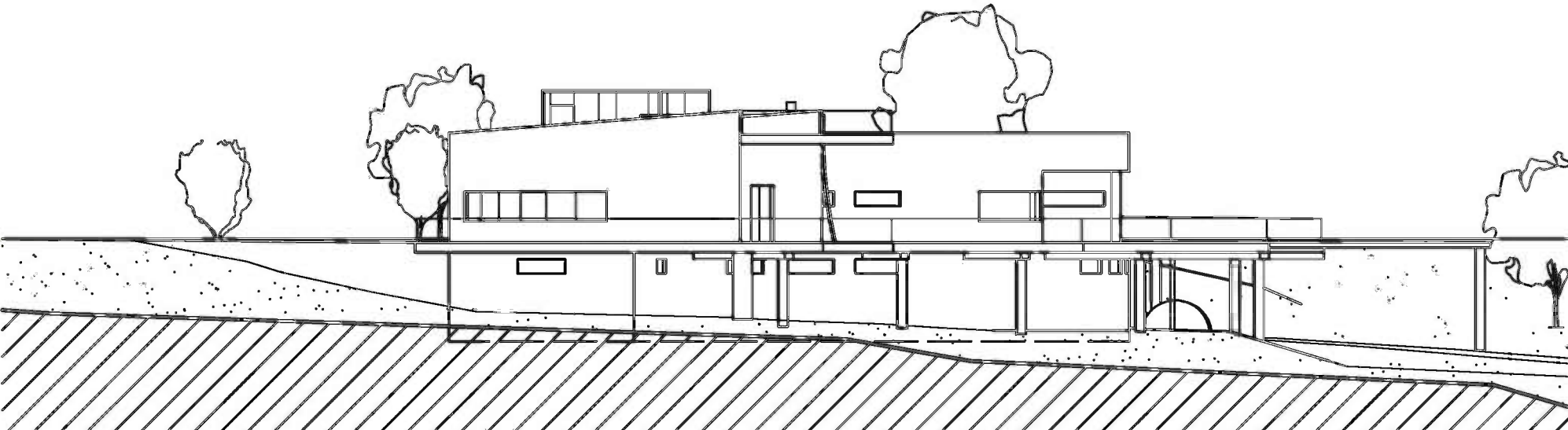
In the complete project there appears the stress laid on the comfortable and interesting admittance to all spaces and on offering the sufficient green and strenghtend areas for relaxing, too.



South-west elevation 1:250



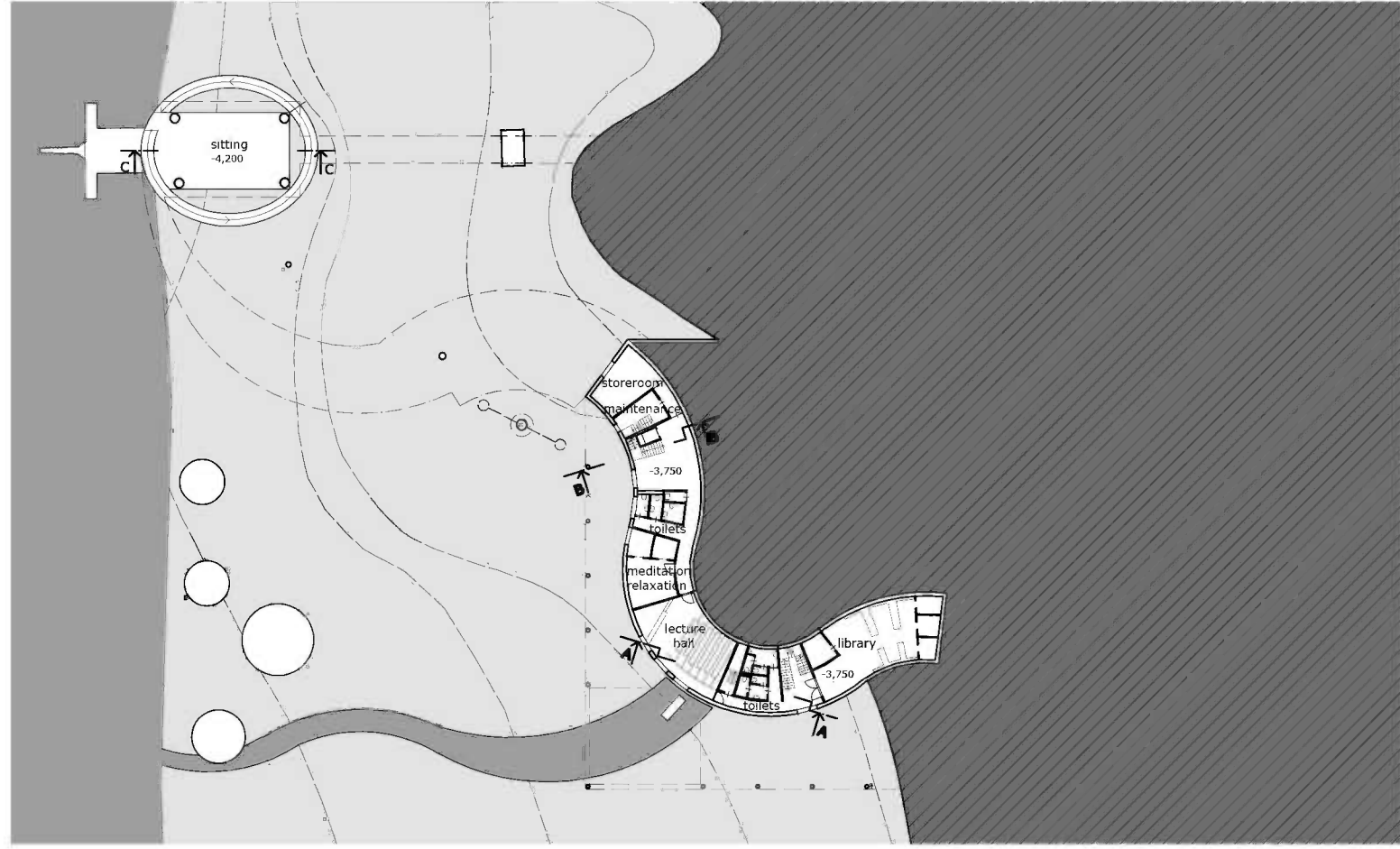
North-east elevation 1:250



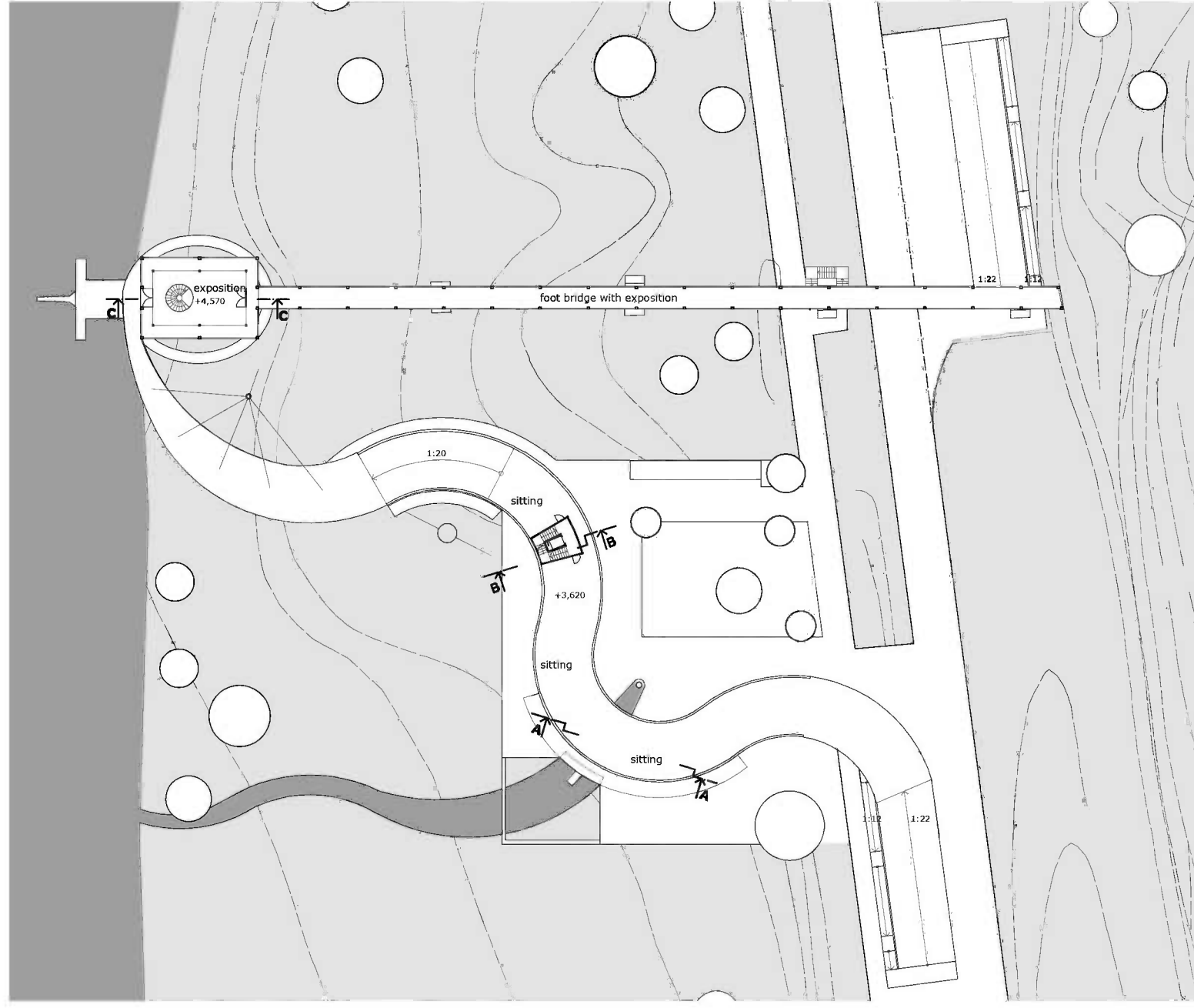
North-west elevation 1:250



Ground floor plan 1:750



Underground floor plan 1:750



First floor plan 1:750

