

to make Schützenmattstrasse accessible only to supply  
 to design two roundabouts to make easier traffic  
 to make a safe connection between city parts for pedestrian

strong transportation infrastructure



to give a new face to Schutzenmatte square  
 to support free spirit of cultural centre Reitschule  
 to create busy meeting point and push out dealers and drug addicts

movement of drug addicts and alcoholics



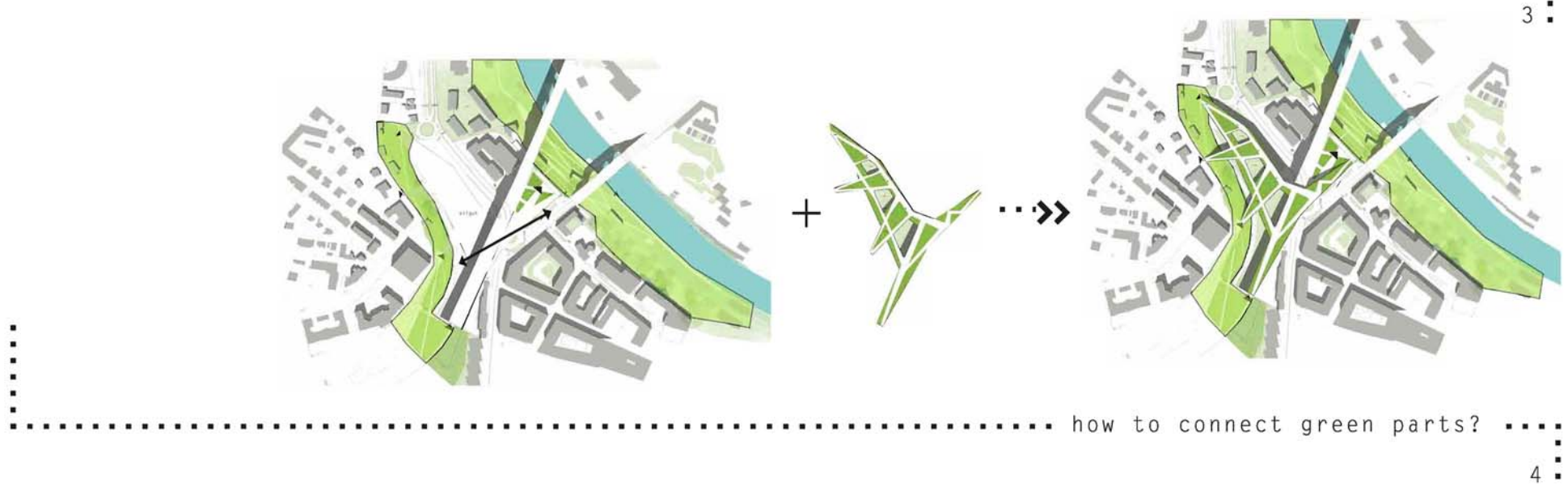
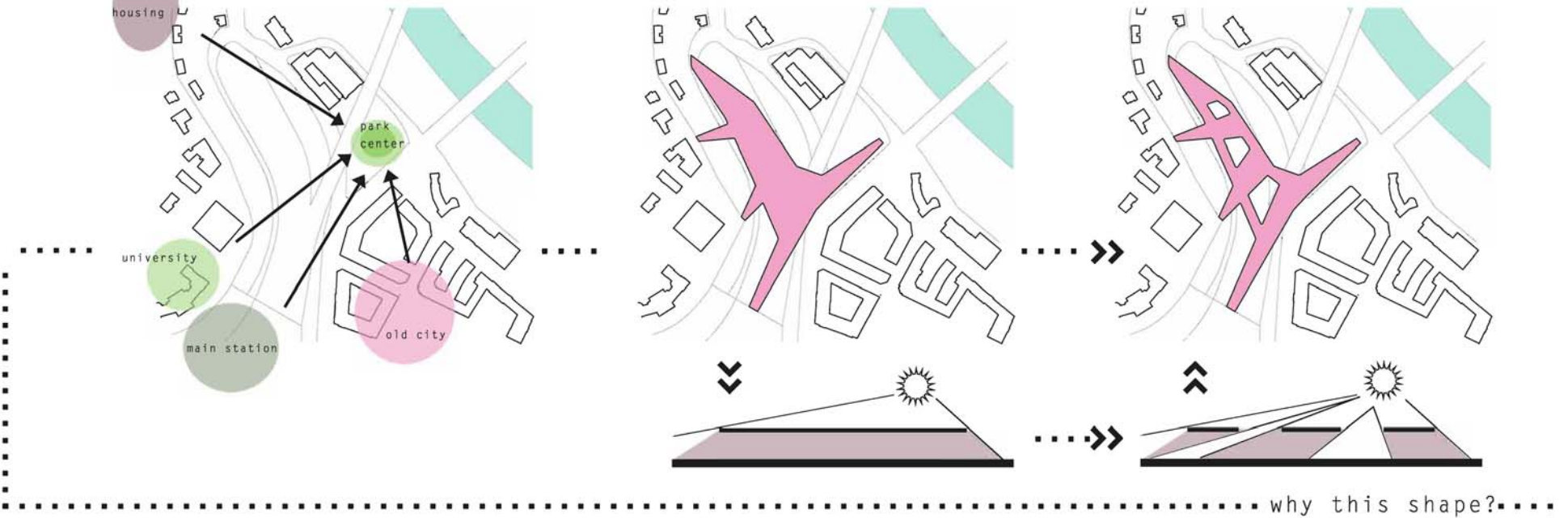
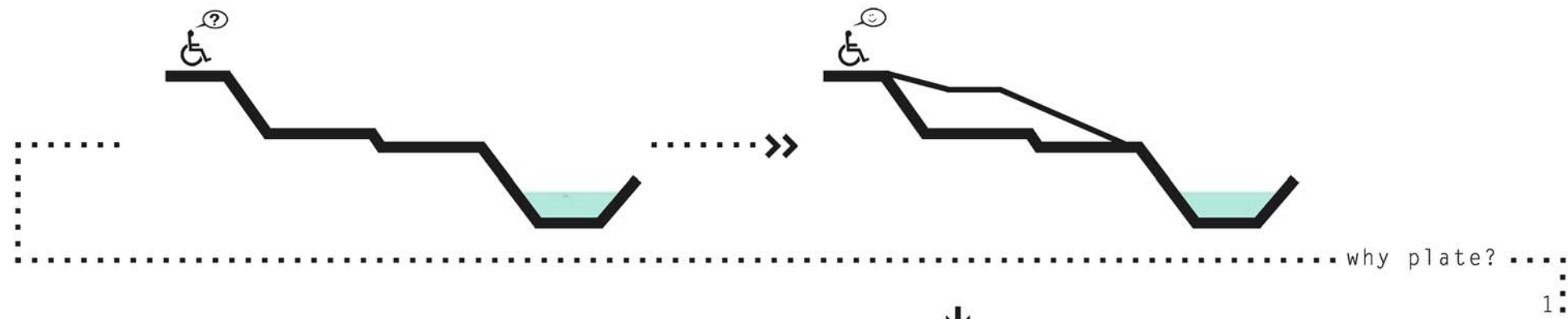
to make a slope accessible for all  
 to use the slope to create interesting structure  
 to transform Aare river valley and create functions and place for rest accessible for all

high slope terrain



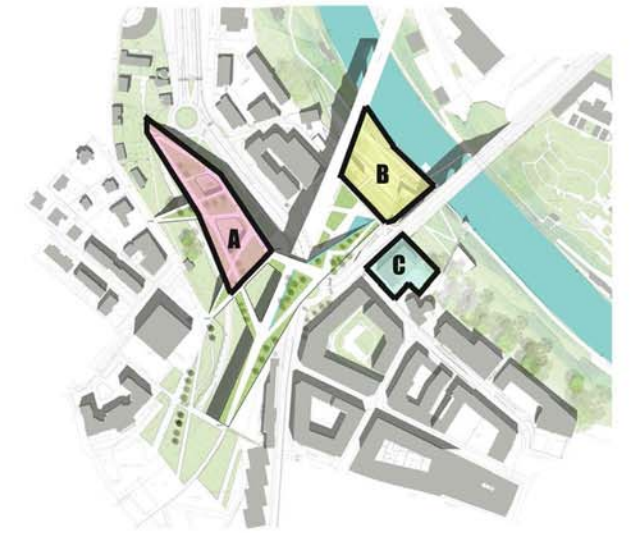
to use eigut site to design multi function centre  
 to add new functions to Aare river valley by newly proposed buildings

newly proposed buildings



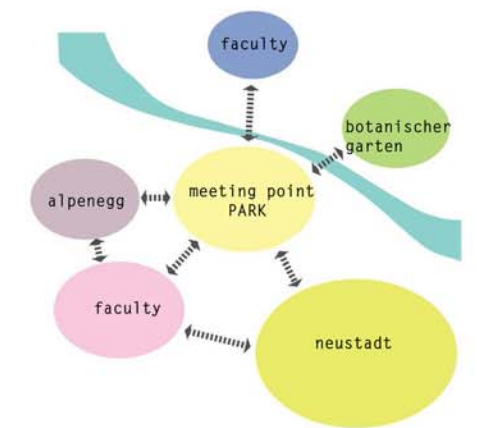


master plan  
 1:1000



urban details

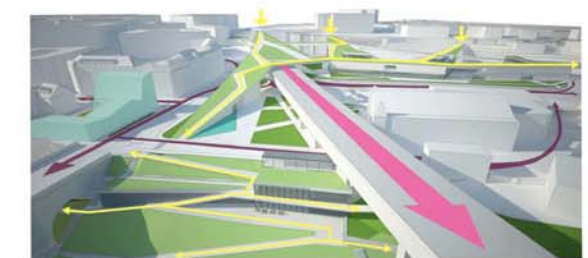
- A** multifunctional centre / wellness, cinema, shopping centre /
- B** Aare river promenade / restaurant, gallery, night club /
- C** treatment centre

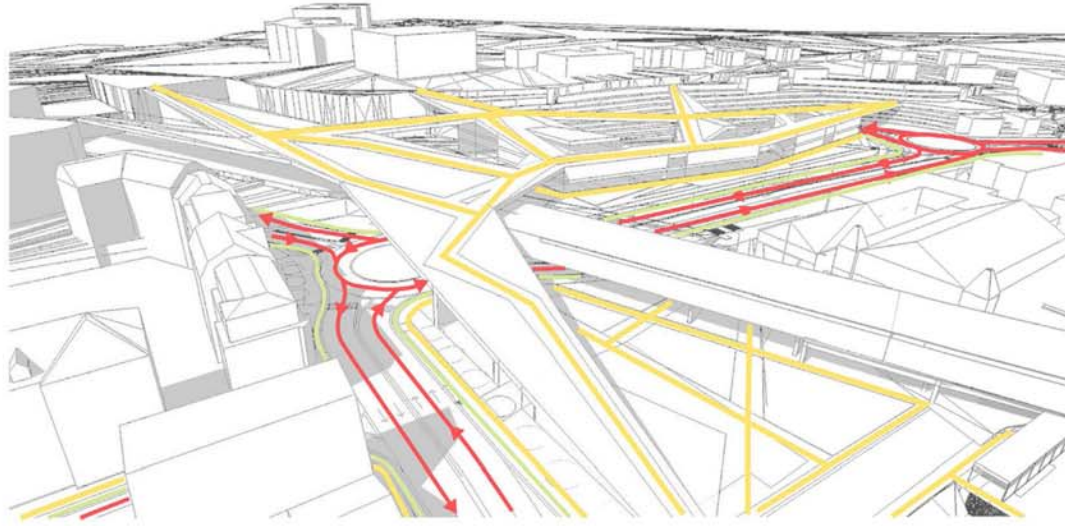


Urban concept is based on connection of city parts by plate form. Plate allows to connect different high levels and bridge over traffic infrastructure. Because of hard traffic influence, we decide to use big mass / plate / to dominate in the area and reduce traffic constructions / especially railway bridge/.

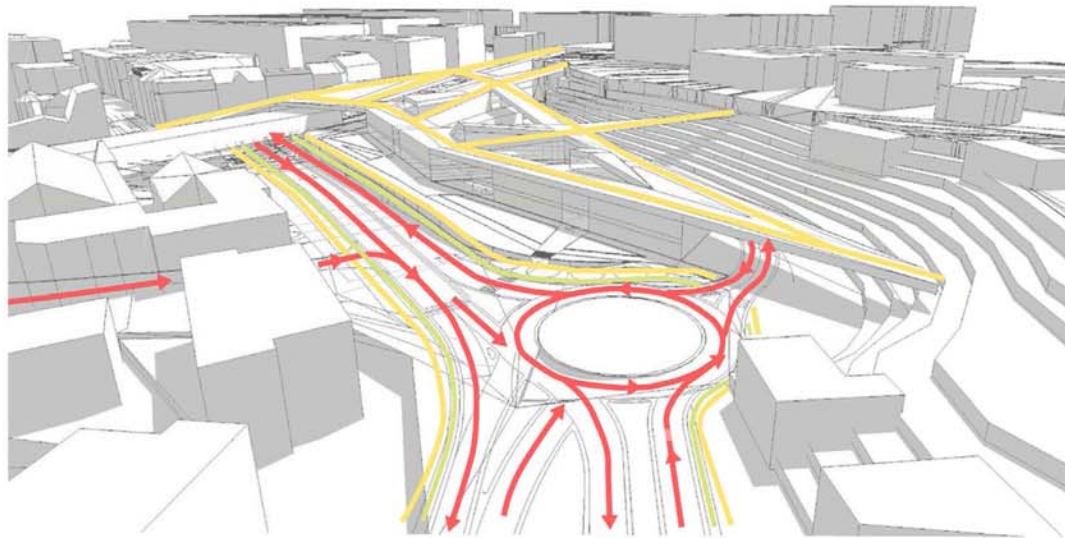
Pedestrian routes lead to meeting point at Schutzenmatte park. Car parking from Schutzenmatte ist situated under the ground. It is combined with lower level of promenade ramp. This allows easier way how to get to promenade for disabled people.

Aare river Valley is connected with upper parts by system of terrain ramps. This solution makes Valley accessible for everyone.





organization of traffic



organization of traffic

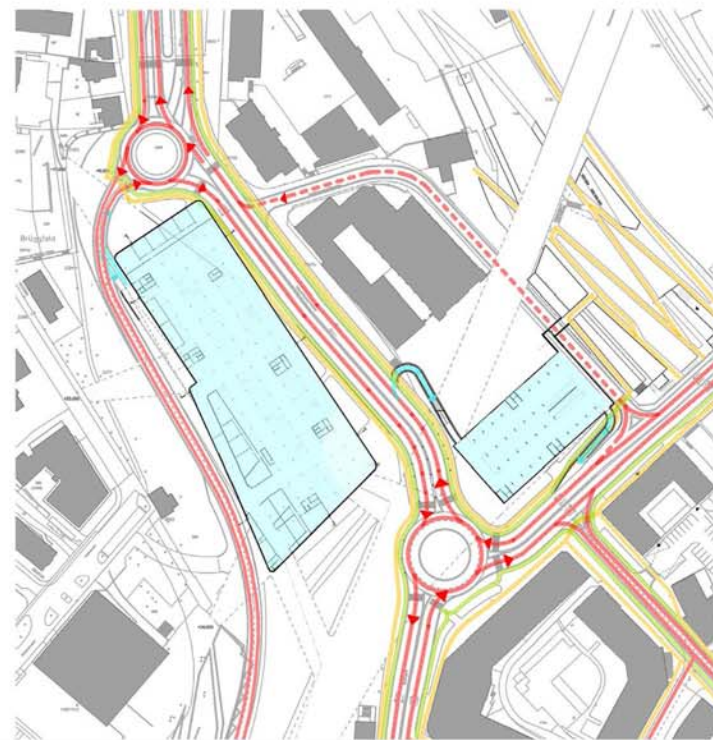
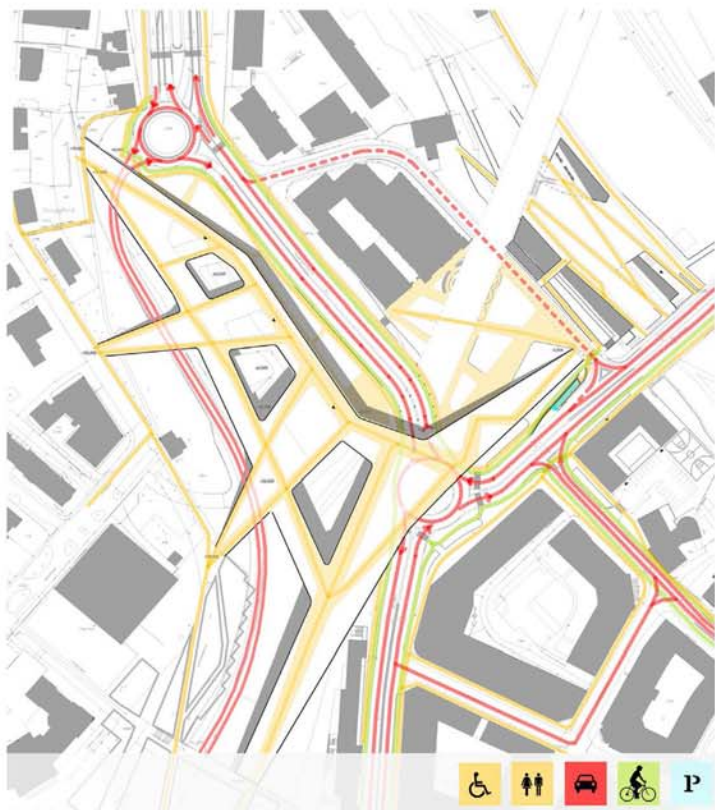
- cycling
- disco
- restaurant
- fitness
- skatepark
- wellness
- night club
- shopping
- toilets
- parking
- cafeteria
- gallery

static traffic is solved by two underground parking.  
 First parking ist situated under multifunction plate and contains from two levels. It is available by strasse.  
 Second underground parking is under Schutzenmatte. In master plan we take parking at the ground and move it under. This way, we got place for park.

System of public transport was created according to analyses, which were given.  
 We designed roundabout at crossing Neubruckstrasse and Bolwerk with radius 25 m. There was designed a second roundabout at the nothern part of Neubruckstrasse with radius 18 m.

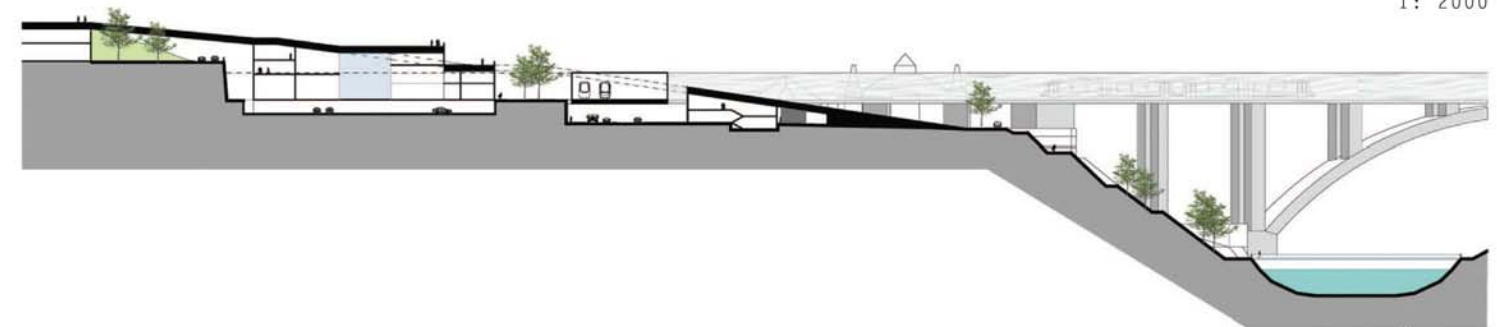


distribution of functions  
 1: 2000



- 
- 
- 
- 
- 

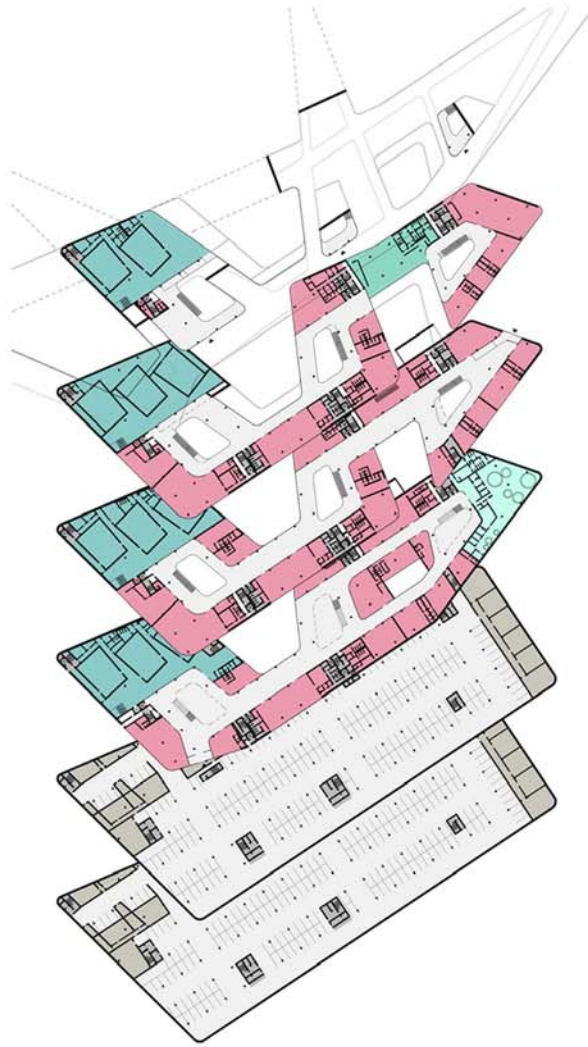
public transport



transverse section



longitudinal section



- parking
- storage space
- communication core
- cinema complex
- wellness
- fitness
- space for rent

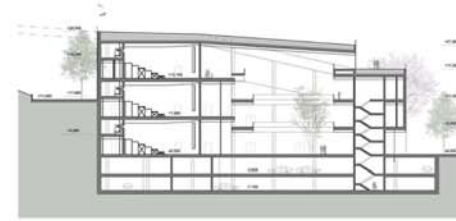
The building of multifunctional center is situated between several districts, near the bank of the river Aare. In addition to strong transport infrastructure of the area, trying to suppress it, is problematic and off-road variety, which forms a barrier between the surrounding neighboring urban areas. The primary objective was to design a facility, that will enable a smooth transition between the surrounding territories without encountering a difficult height levels, which is also attractive for its widefunctional filling. This is achieved through the plate, forming an integral part of architecture, which is subordinate to him and also forms a significant element in the urban image.

Plate is designed as a set of shaped ramps with gradients complying with the persons with reduced mobility. Its dynamic shape just comes from the connection to the surrounding areas as widely as possible. Communications are joining together to the mouth of the river Aare new proposed mall.

The building is designed by three blocks that are interconnected. Between them there are created atriums, which alternate with interior galleries. Each gallery comes up to the level of plate, so there is access to the object also from this level. Access to the underground garage is handled behind the building.

The building consists of two underground floors and four storeys.

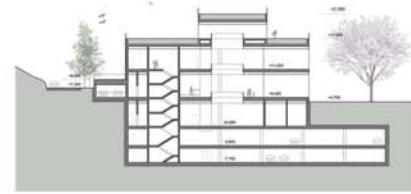
The underground floors are used as garages. The first floor is largely embedded in the ground and the main entrance is located against the park square. As well as all the other floors, it consists of rentable space, shops and services, restaurants, cafes, it houses the wellness center and theaters that are accessible from the ground floor and also from the level of the plate. On the second floor main entrance is located on the opposite side of the building, in a way which ensures the circulation of the visitors. The third floor offers visitors a vast terrace for relaxation. The fourth floor consists of entrances to the building and interior galleries provide the main vertical movement of visitors within the building. Where possible, the individual floors are connected within the atriums by ramps with a slope suited for persons with reduced mobility.



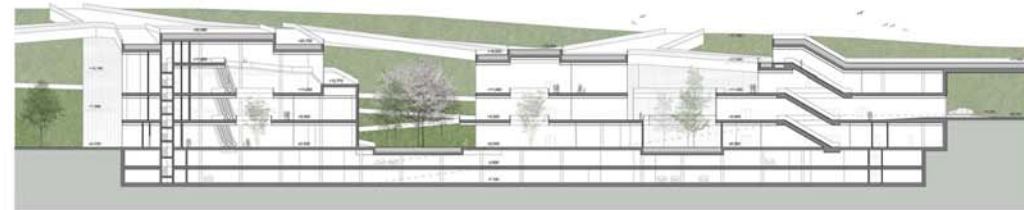
transverse section A



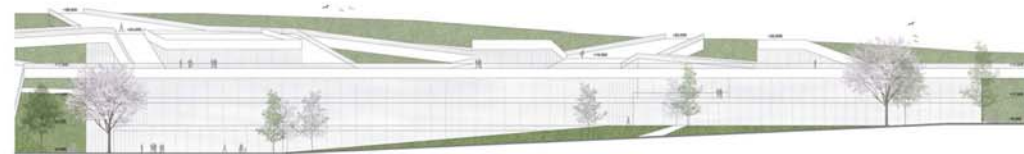
transverse section B



transverse section C



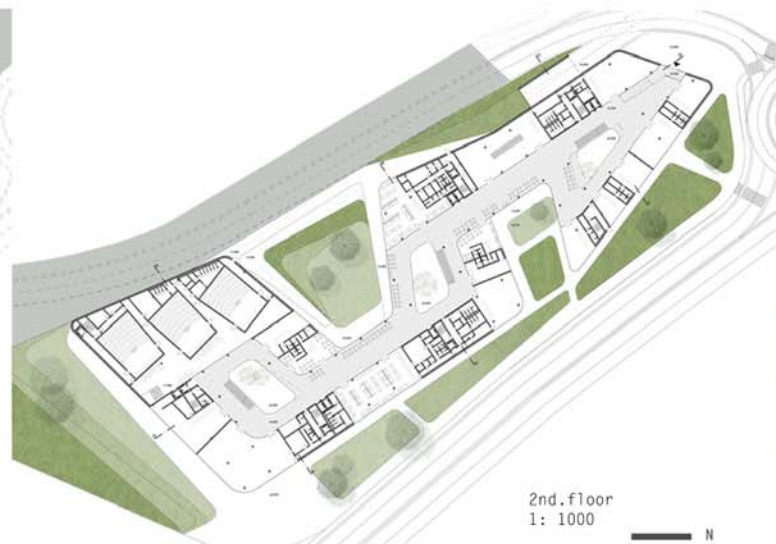
longitudinal section 1:1000



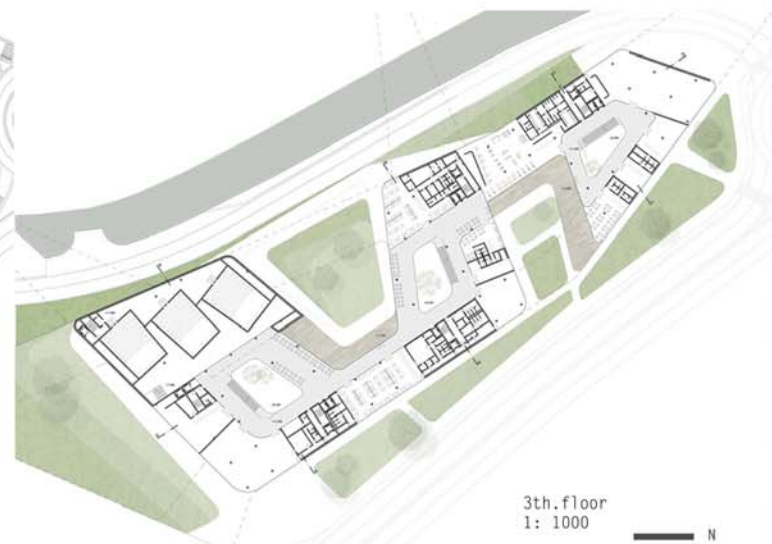
north elevation



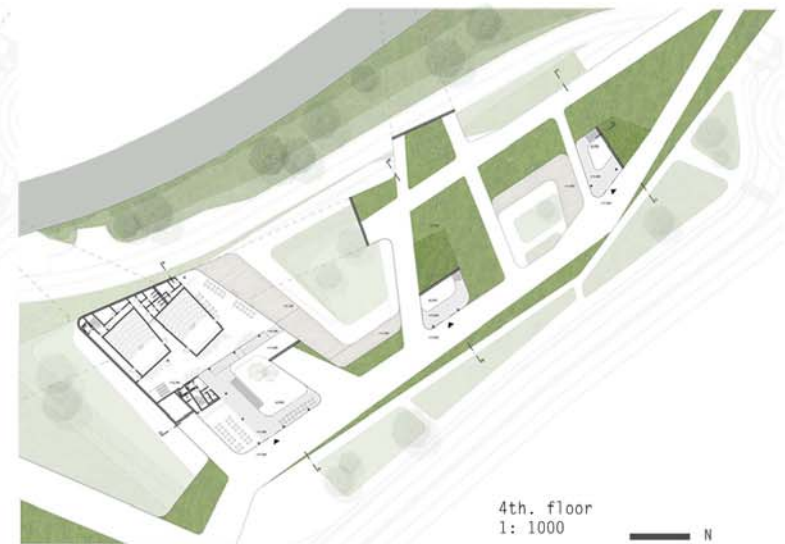
1st. floor  
1: 1000



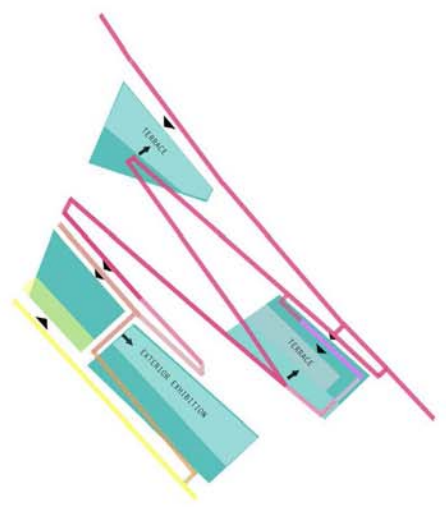
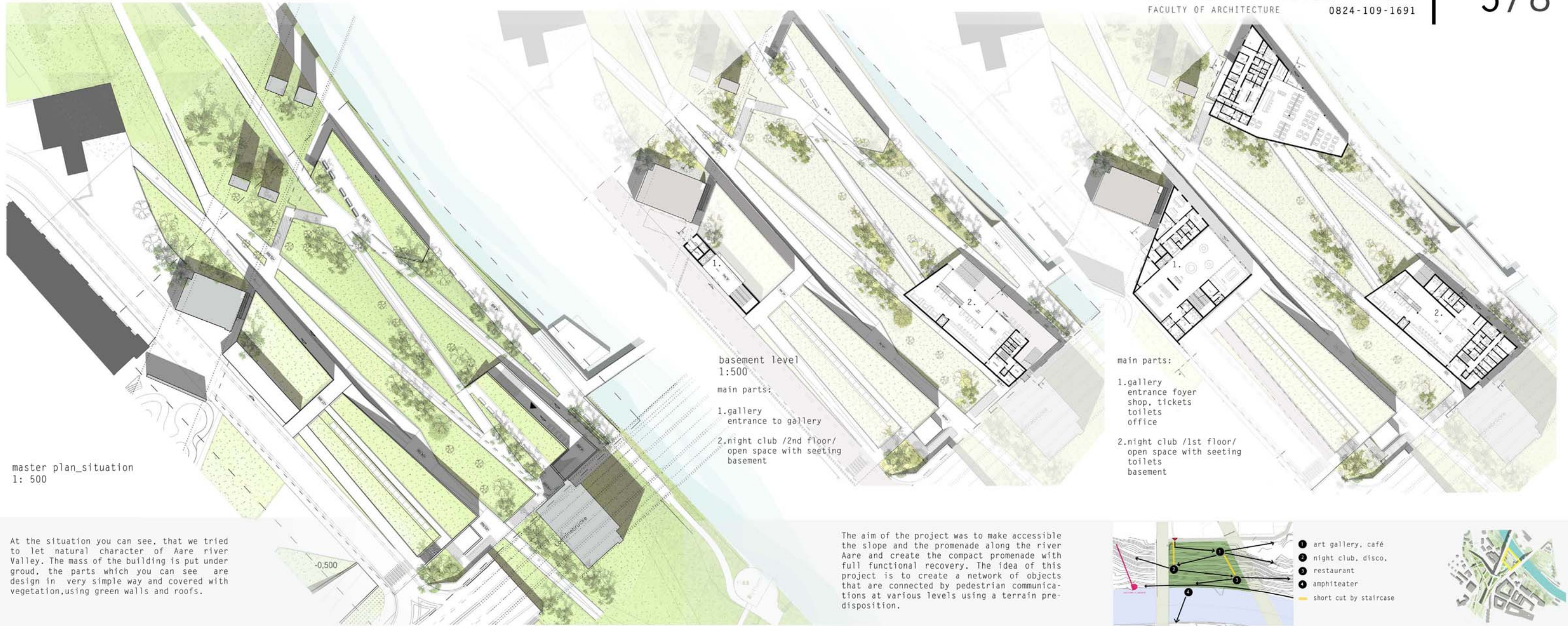
2nd. floor  
1: 1000

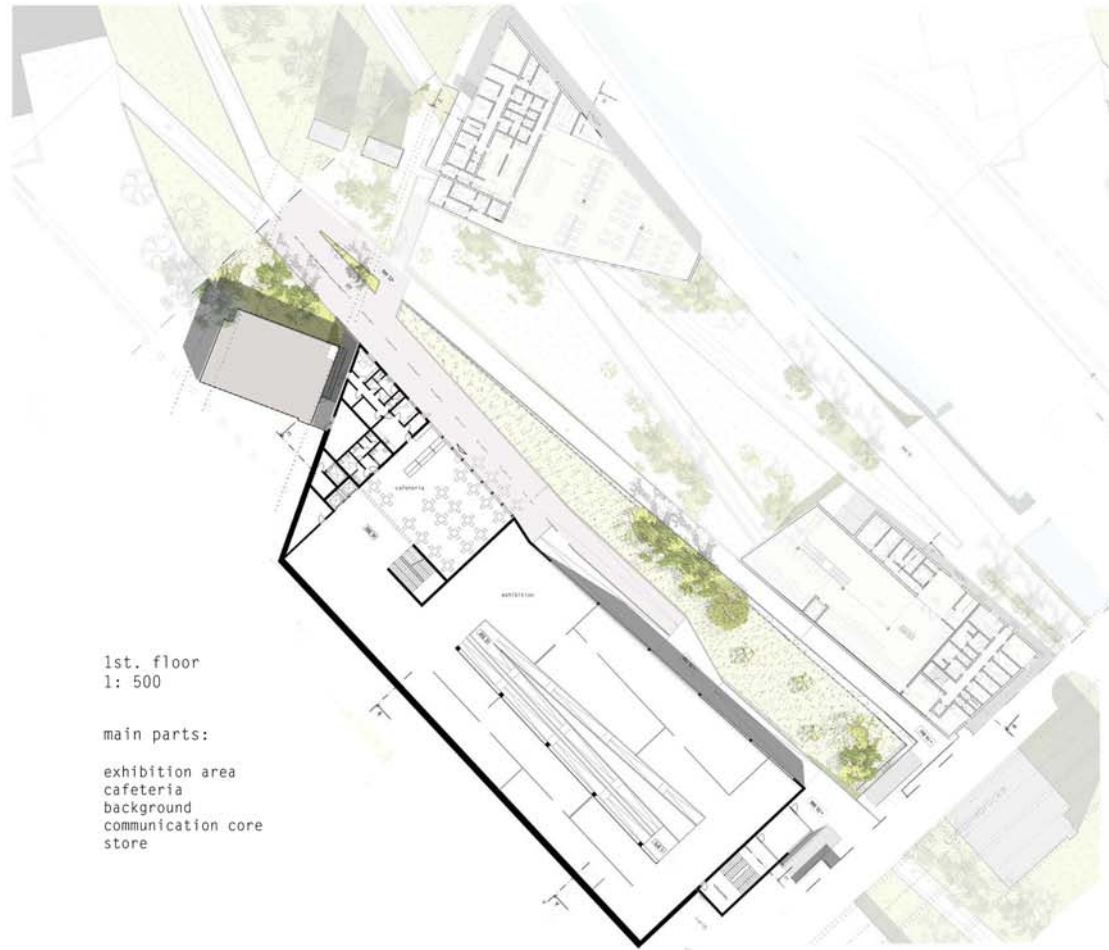


3th. floor  
1: 1000



4th. floor  
1: 1000





1st. floor  
 1: 500

main parts:

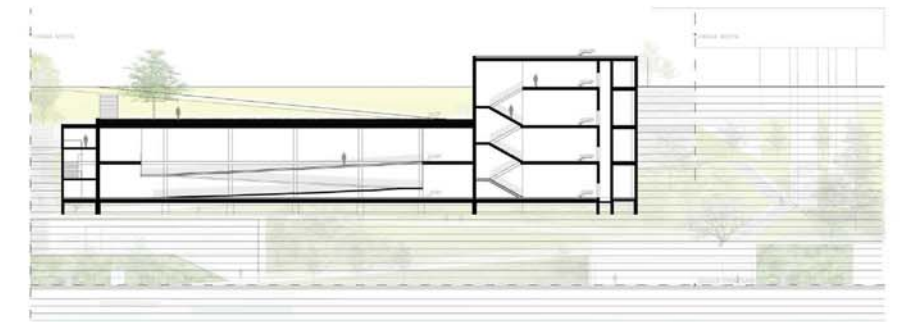
- exhibition area
- cafeteria
- background
- communication core
- store



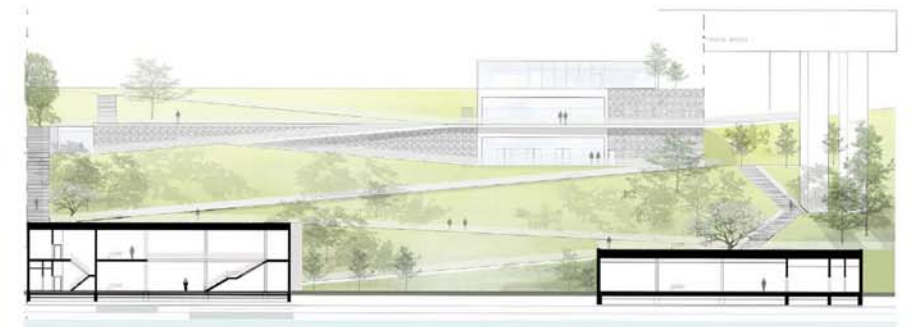
1st. underground  
 1: 500

main parts:

- exhibition area
- background of gallery
- communication core
- store



longitudinal section  
 1: 500



longitudinal section  
 1: 500

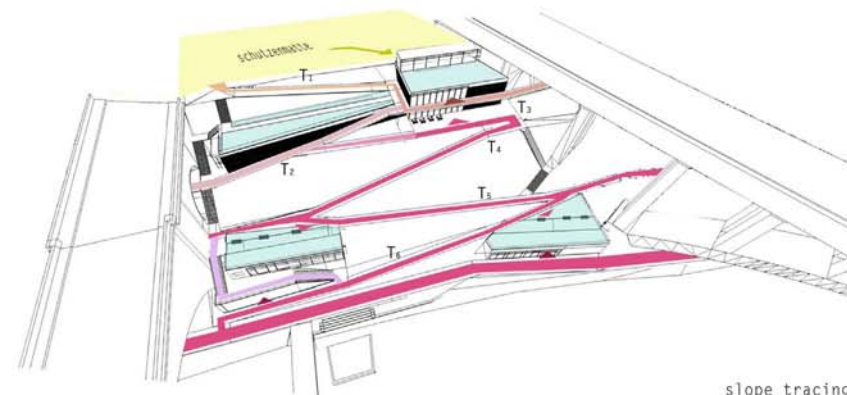


interior pictures



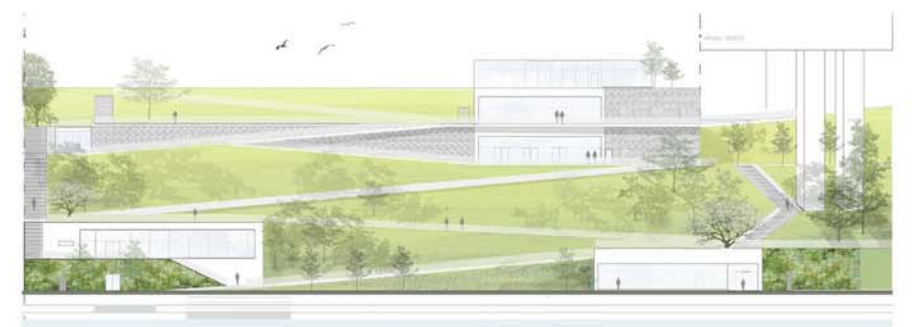
entrance level concept

objects	long	high
entrance to gallery from Schutzenmatte	T <sub>1</sub> = 55 m	3,9 m
entrance level to exterior gallery and main entrance foyer	T <sub>2</sub> = 52 m	3,8 m
entrance level to 2nd floor night club	T <sub>3</sub> = 35 m	2,8 m
entrance level to gallery cafeteria, 1st floor night club, restaurant going down the promenade	T <sub>4</sub> = 96 m	7,4 m
	T <sub>5</sub> = 65 m	3,4 m

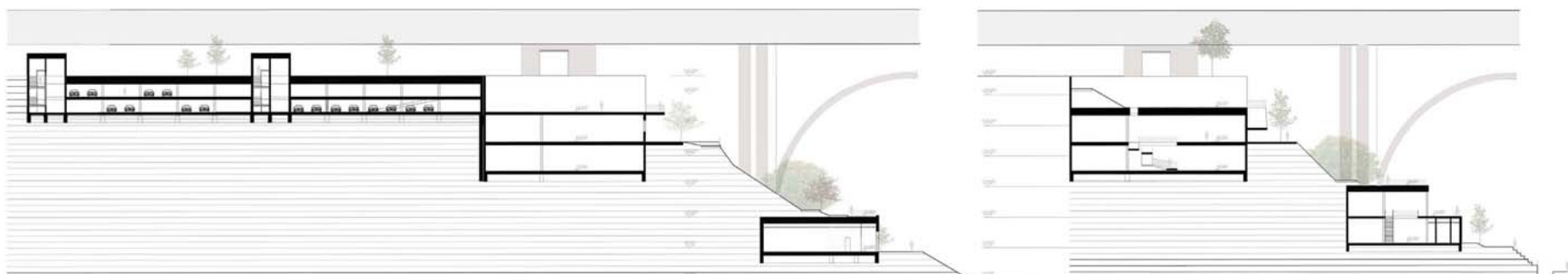


slope tracing

Object of gallery contains with function of youth centre Reitchulle. There are three entries to the gallery, which is given by arrangement of the promenade slope. First entrance is from Schutzenmatte park, it's small object only with communication core. Second entrance is one level under first one and goes to main entrance hall. Third entrance is one level under second one and goes through gallery cafeteria.



elevation  
 1: 500



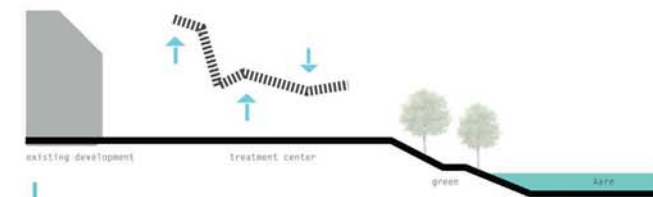
transverse section, 1: 500



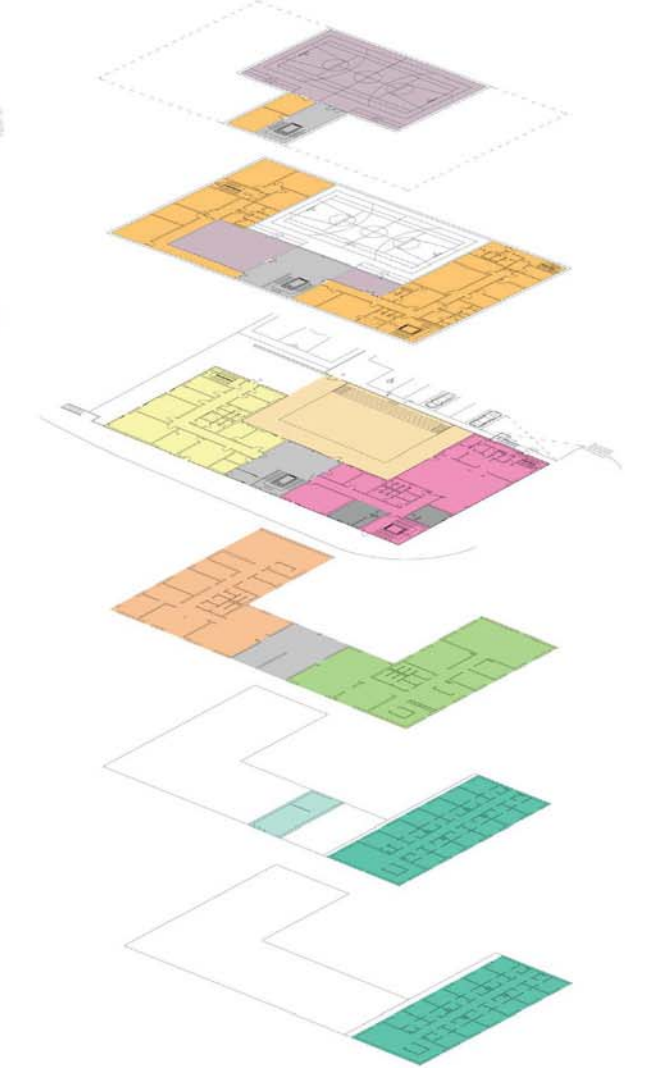
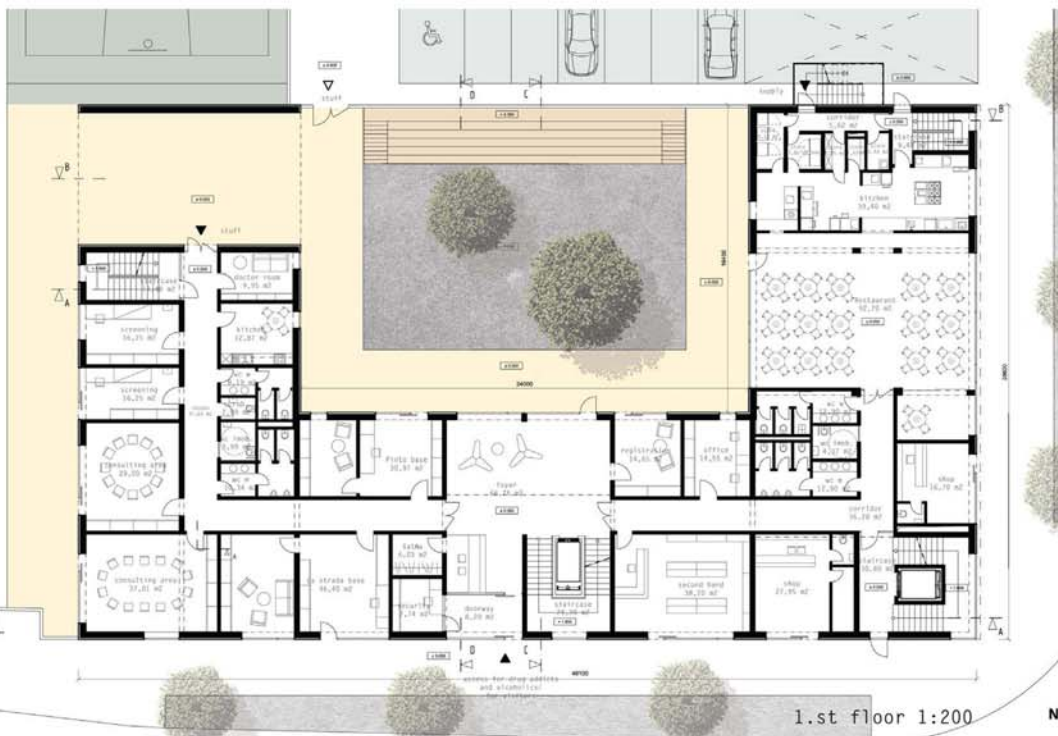
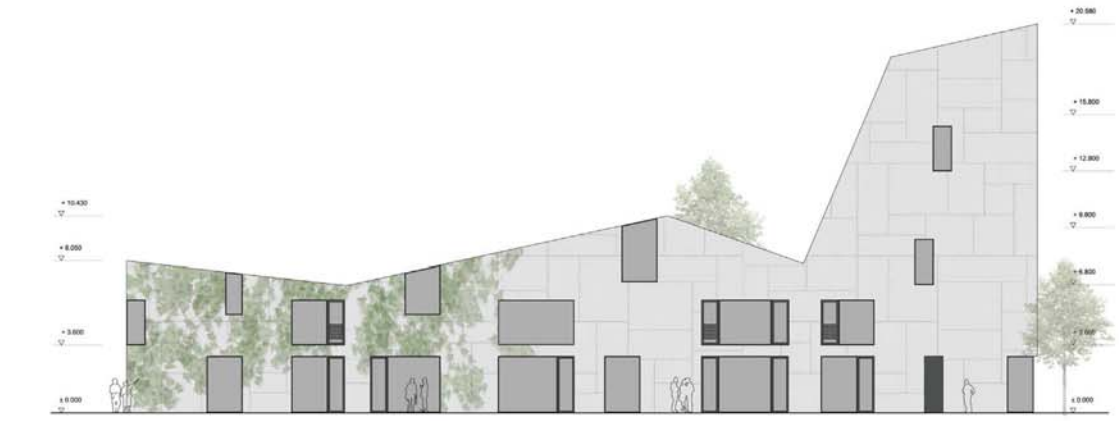
The aim of the project was to design a treatment center for drug addicts and alcoholics in the city of Bern. The institution is meant to lead to an improvement of the specific area of increased incidence of drug addicts, dealers and alcoholics. The center will serve longterm patients undergoing treatment and will provide day care as well, ensuring outflow of antisocial elements from the streets into hospital premises.

The district bordering historical center of Bern gives a devastated and unpleasant impression and has been described as the nastiest area of the city of Bern. For the development of this area, a project was designed with the aim to create a treatment center for the addicted. The goal was to combine two separately functioning centers, a day center and a center providing long-term therapy and accommodation for patients in rooms. The institution should provide outflow of anti-social elements from the streets into premises of the treatment center.

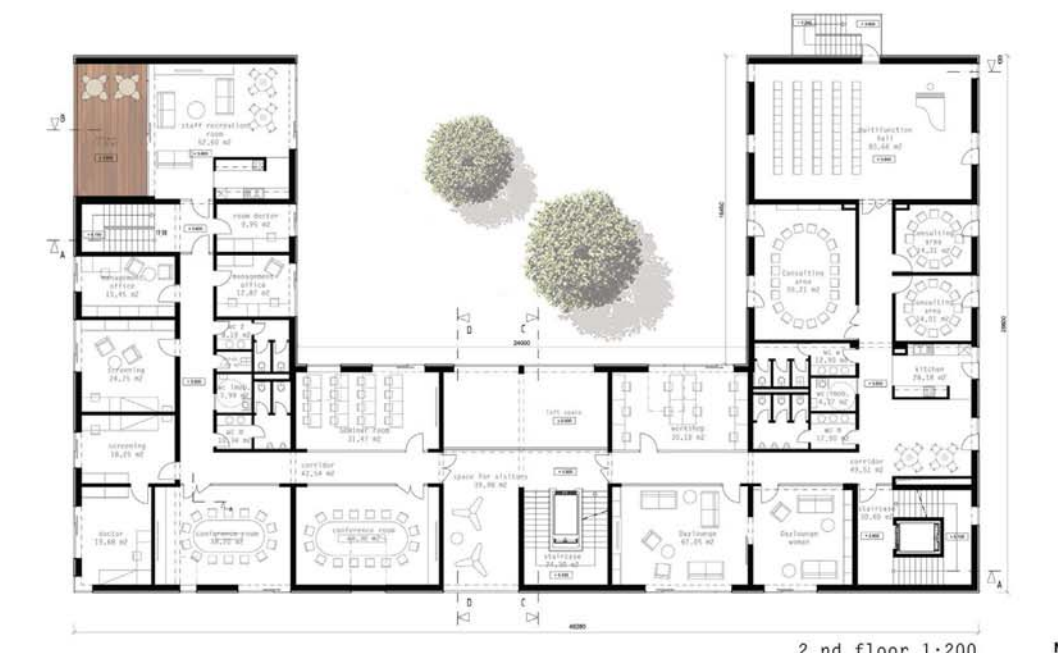
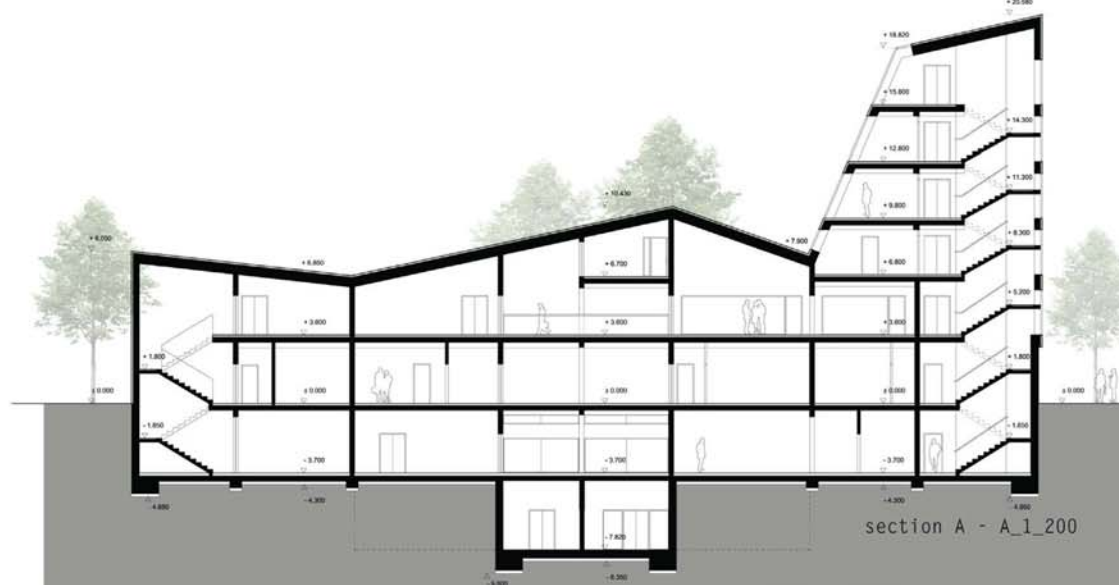
Objects in the vicinity are mostly historical in nature, given that the treatment center is located on the edge of historic downtown Bern. Original mass structure is heterogeneous in nature, there are buildings with different height division. The nearby building is a newly designed multifunctional center, providing a wide range of entertainment and also a pedestrian promenade along the river Aare.



Vertical division of the matter and its highest point of the accommodation facility is derived from the height of adjacent buildings. Mass of the treatment centre decreases continuously, copying the decline of the natural terrain descent to the river Aare.

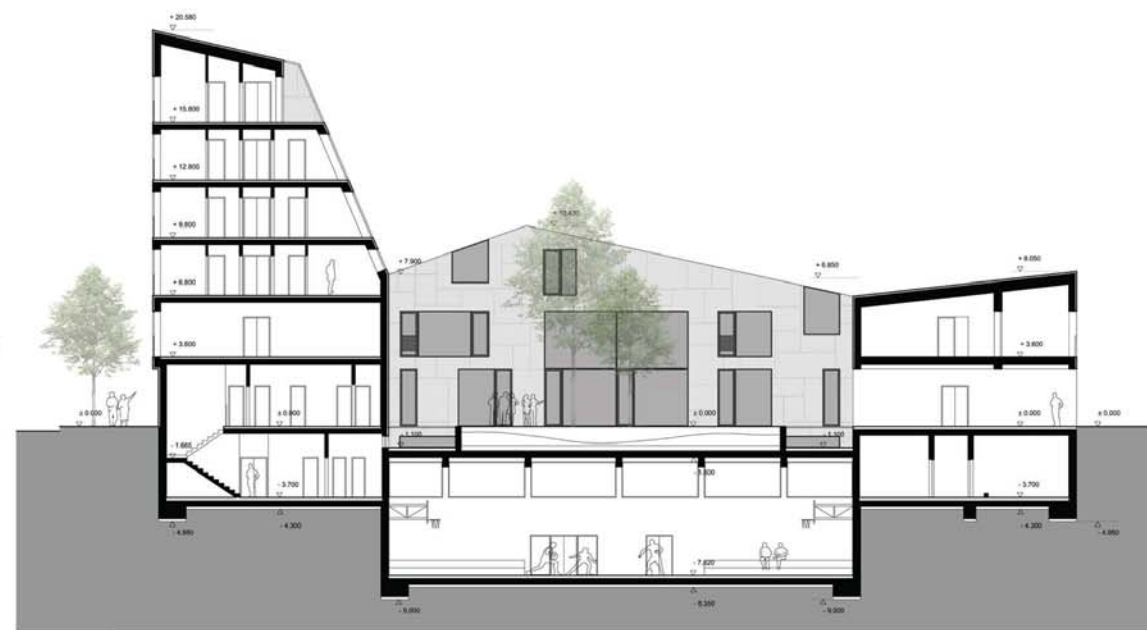


- sport
- dressing rooms/stores
- day care/examination rooms
- dining room
- central hall
- courtyard
- landlords premises
- long-term treatment/examination rooms
- leisure activities, session/long-term patients
- director
- accommodation 3.floor female 4.-6.floor male





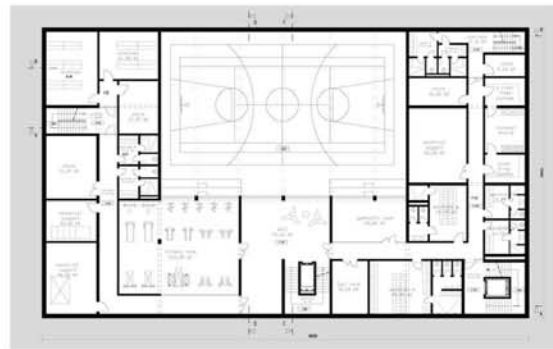
section C - C 1:200



section B - B 1:200

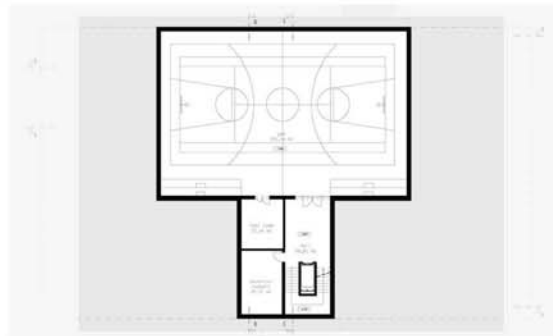


section D - D 1:200



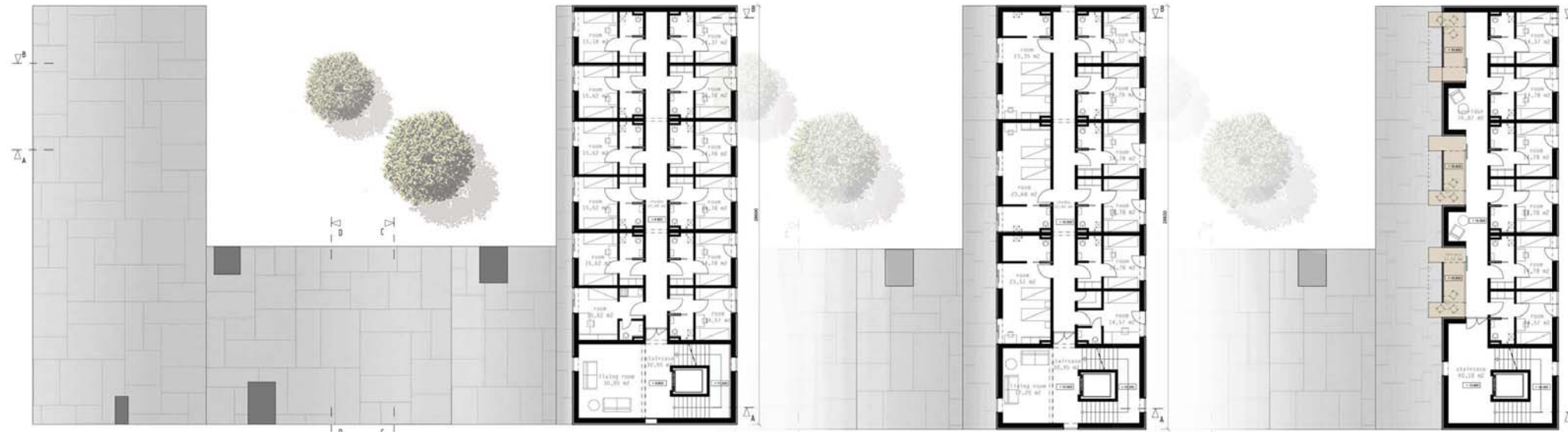
1.st underground floor 1:400

The building consists of six aboveground and two underground floors. The treatment facility is functionally divided into a day care centre and long-term treatment centre. These facilities work independently. The building has, in addition to hospital facilities, rentable space on the ground floor. Parking is provided by an outdoor parking lot.



2.st underground floor 1:400

The intention was to create a private enclosed yard, which would form a relaxed, undisturbed area for patients. The heart of it is open space oriented to the river, which is used for active recreation of clients. Strong architectural molding? material is supplemented by a simple austere facade. As for color and material, the facade has a uniform solution in fibreC concrete cladding panels to achieve a compact mass.



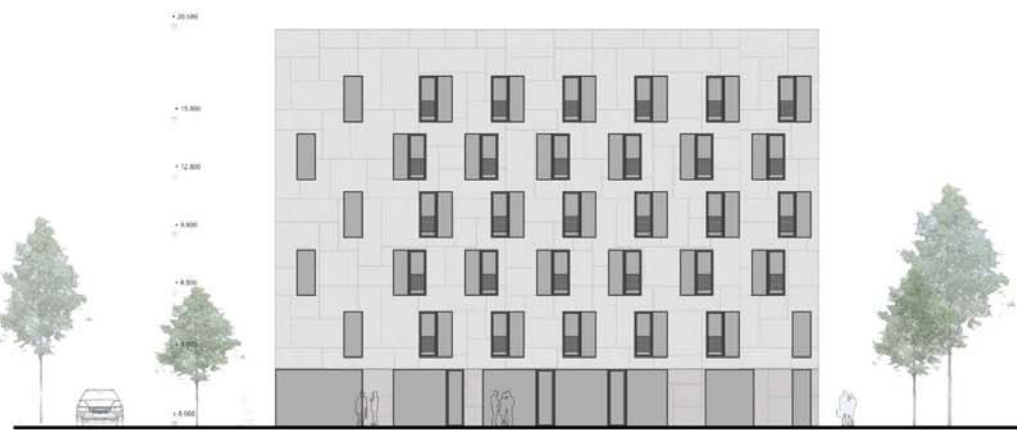
3.- 4.th floor 1:200

5.th floor 1:200

6.th floor 1:200



The location, shape and height of the building is affected by defined plot of land surrounding the historic (mostly block) buildings, highly prevalent gabled and pitched roofs. The urban solution itself is based on completion of the block building area, by which the confinement towards the newly designed square is achieved. Urban structure of the area is again supplemented by the object from the southwestern side of the land, which is bordered by roads leading from the city center. Entry for patients and visitors is oriented towards the square while the staff entrance is located in the parking lot behind the building.



southwest elevation 1:200