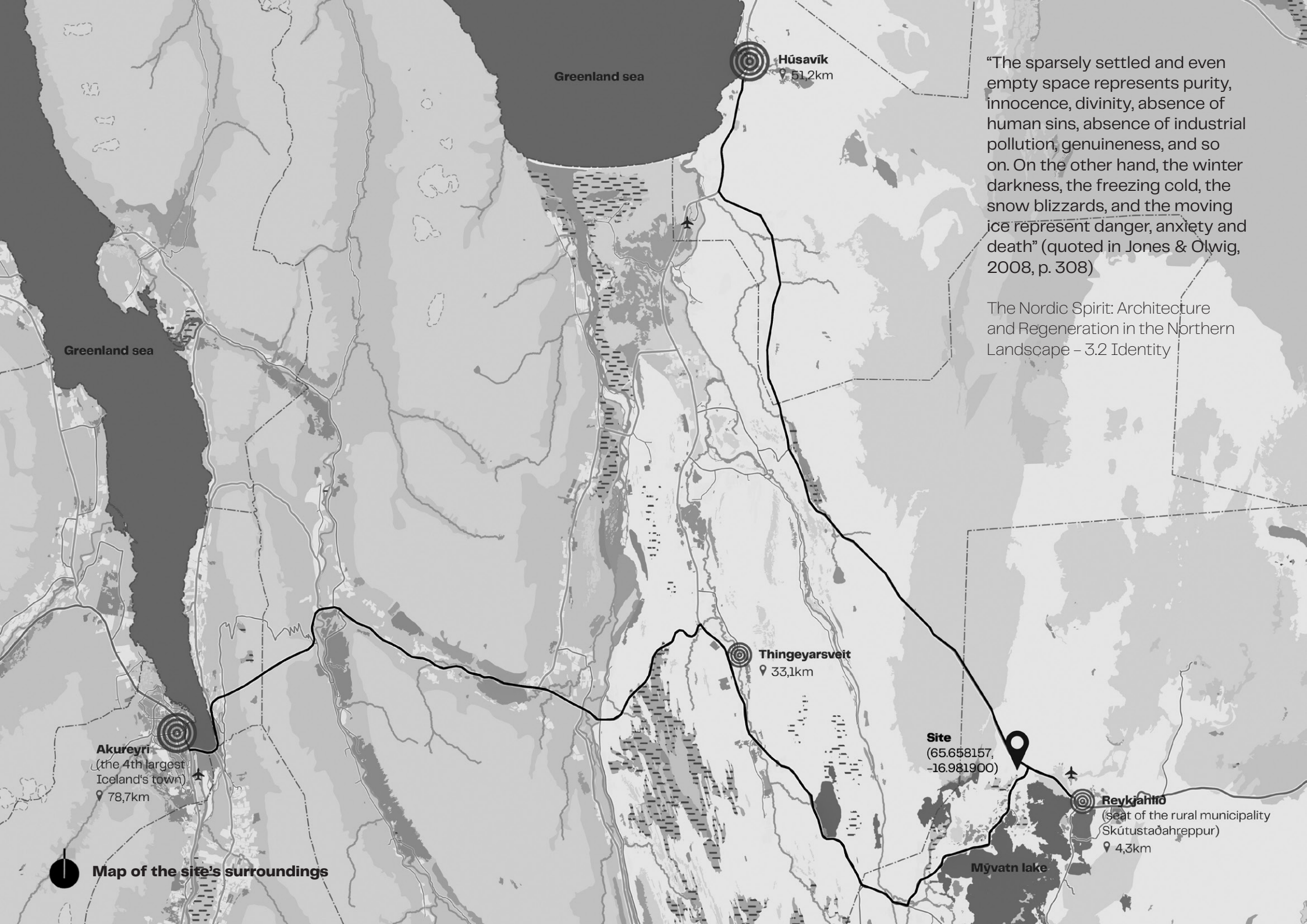


ICELAND MYVATN LAKE COMMUNITY HOUSE
COMPETITION

Bc. Dajana Maršovská
Ateliér II_2021/22
VA Varga/Šíp





Greenland sea

Húsavík

51,2km

“The sparsely settled and even empty space represents purity, innocence, divinity, absence of human sins, absence of industrial pollution, genuineness, and so on. On the other hand, the winter darkness, the freezing cold, the snow blizzards, and the moving ice represent danger, anxiety and death” (quoted in Jones & Olwig, 2008, p. 308)

The Nordic Spirit: Architecture and Regeneration in the Northern Landscape – 3.2 Identity

Greenland sea

Akureyri

(the 4th largest Iceland's town)

78,7km

Thingeyarsveit

33,1km

Site

(65.658157,
-16.981900)

Reykjahlíð

(seat of the rural municipality
Skútustaðahreppur)

4,3km

Mývatn lake

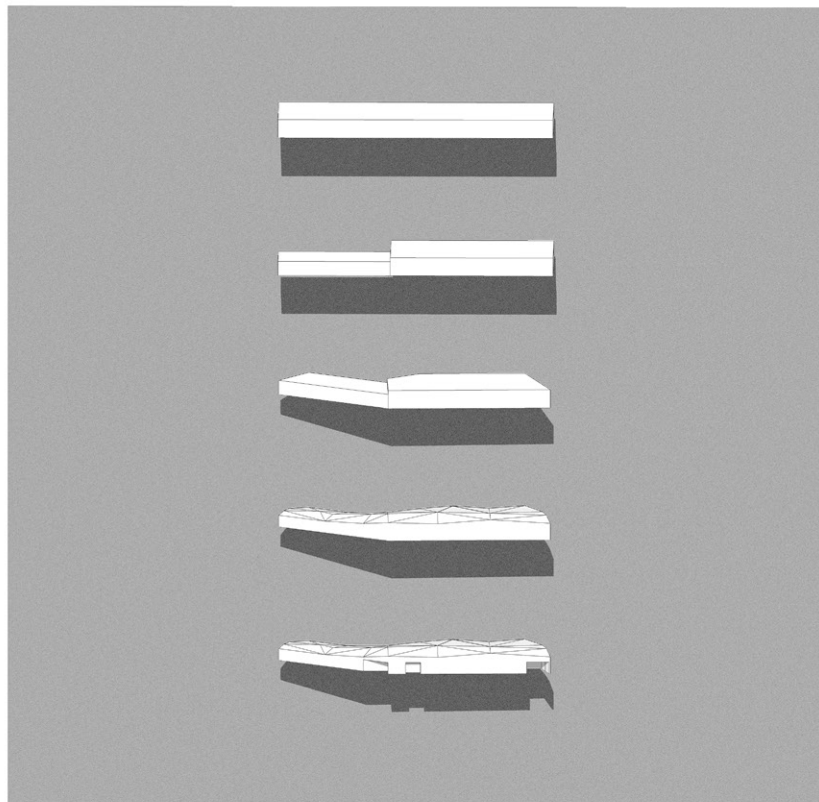
Map of the site's surroundings



Mývatn Lake



Námaskarð geothermal area



- intention in the context of wild nature: long, linear-shaped object
- the contrast of functions led to the need of dividing spaces
- the final concept – a bent-shaped mass, encloses the declining terrain
- the glacier influence takes its place in horizontal shaping of the building and its roof
- the rift influence is present in the bent design and the visual “cutting” in the building done by main entrances

Project's background

The Iceland Myvatn Lake Community House project asks for a newly designed multipurpose centre which will provide both community/cultural activities alongside with some important technical functions, such as waste management, sharing and recycling materials/resources and others.

The technical functions will occupy largely more space if compared to the needs of the community part. This becomes a crucial point while thinking about the building design, because the final volume will clearly not stay small-sized and the functions involved have contrasting characters.

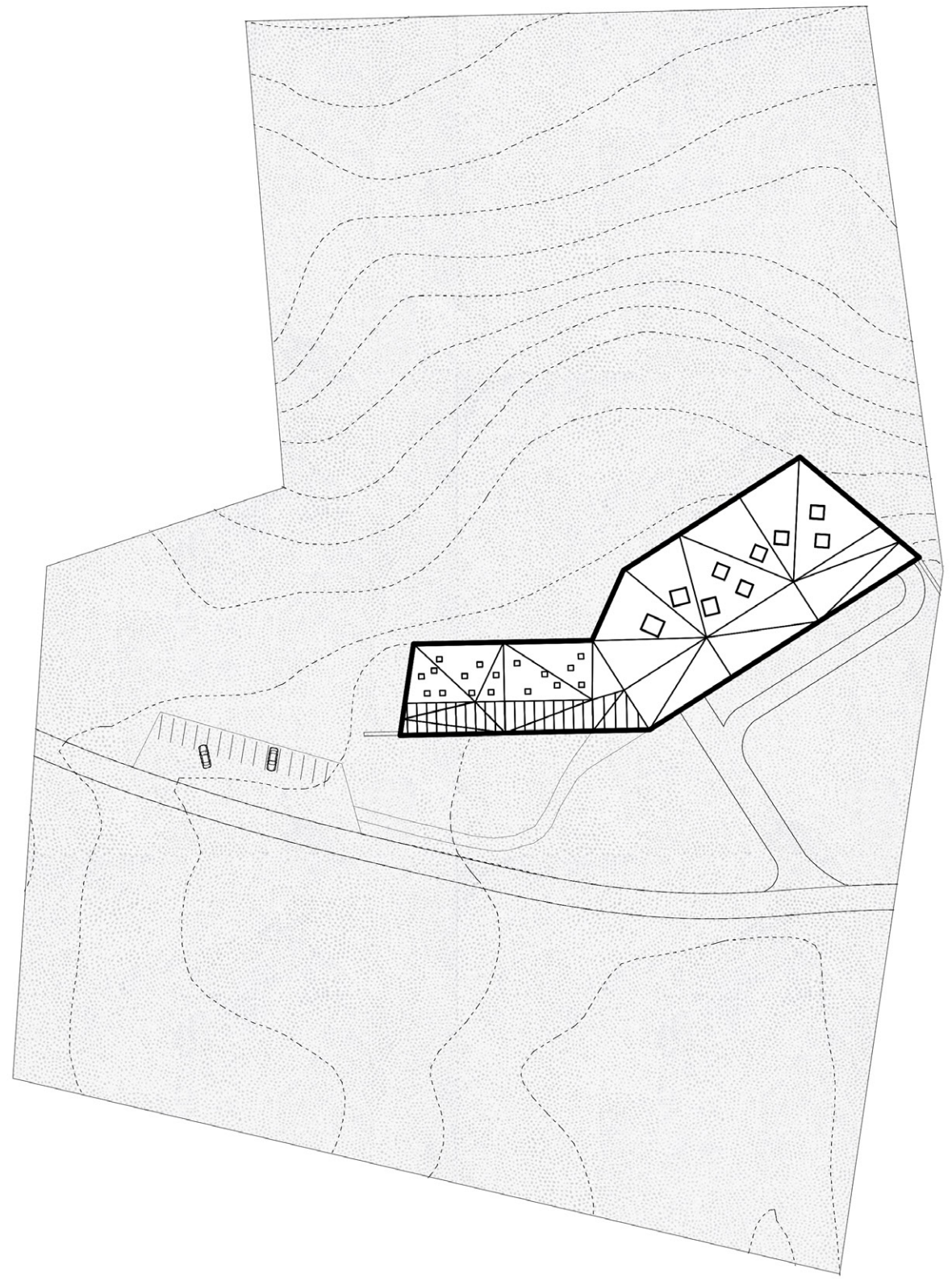
Another important thing to mind is the character of the site and its surroundings. The Iceland nature, which is pure, open, scarcely populated and therefore somehow empty, does not give precise limitations, neither it gives a hand with any predefined type of architecture that would suit well such place.

When I thought about such open-space land, it led me to think two images: A brilliant-white glacier laying dominantly in the land, and the Icelandic rift, which characterises the origin of the land.

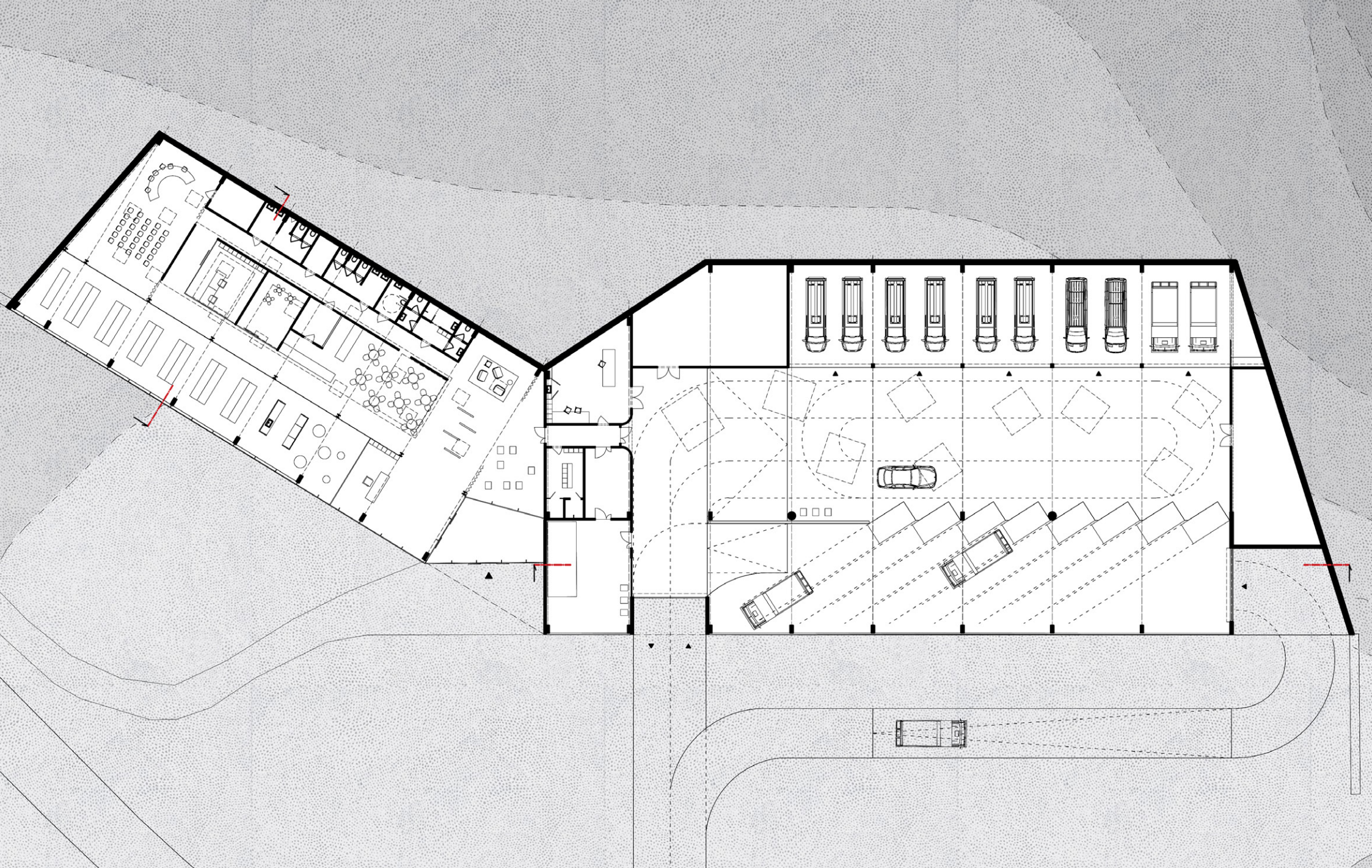
The glacier fascinated me with its shape, the very precise image it creates in the vast surroundings, the way it stands out with its enormous volume and its color, but in the same time fits in with its somewhere cracked, somewhere gently curved surface, with the way it plays with lights and shadows.

The Icelandic rift, on the other hand, reminds me of the contrasting characters and needs of the functions asked to fit in the building.

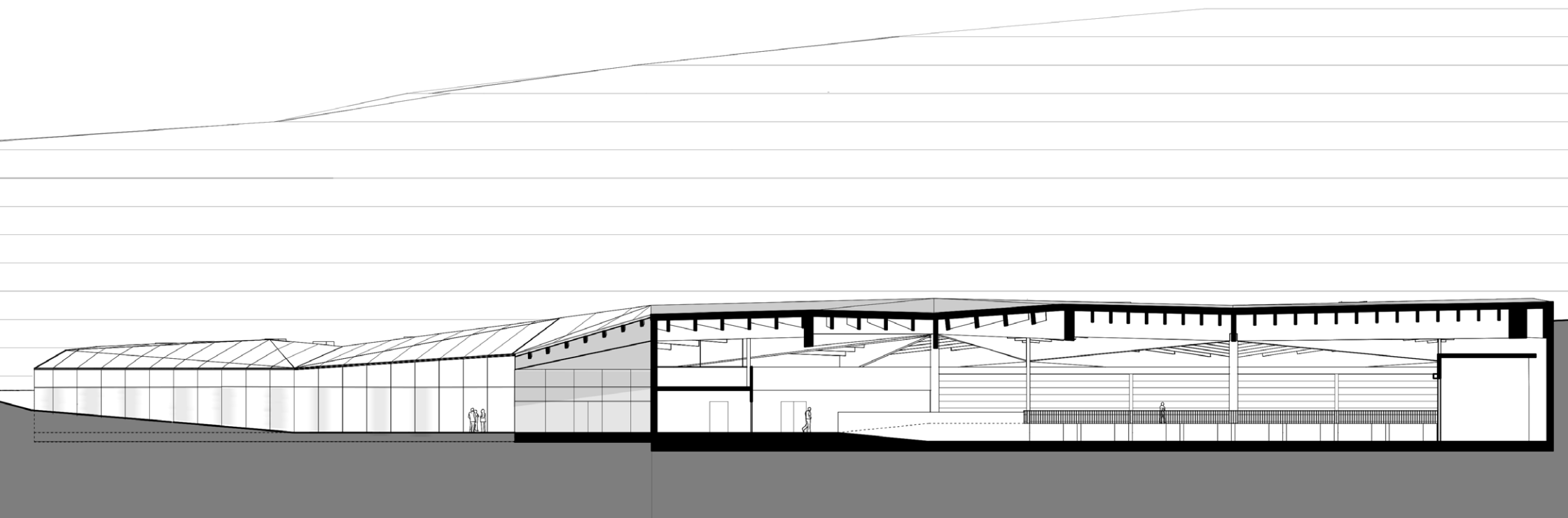
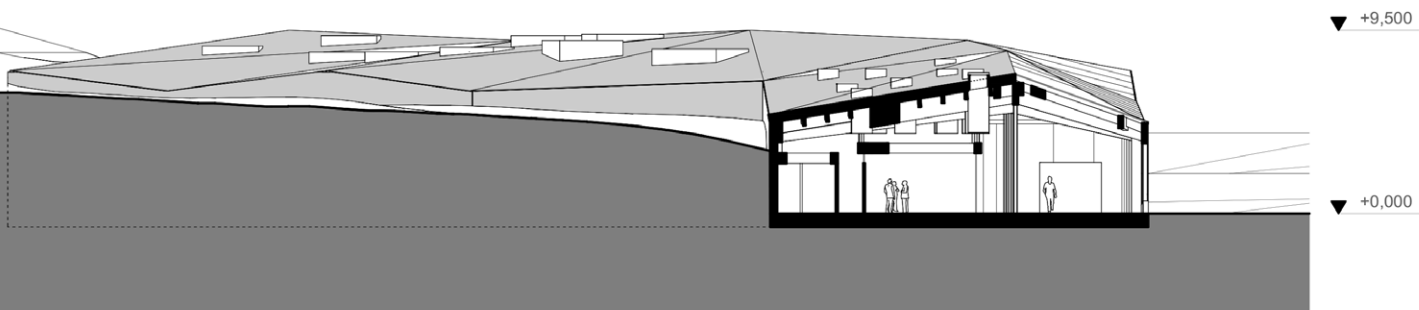
In my final proposal, I looked up to and tried to work with both of these natural inspirations, which I think highly characterise the vast Icelandic landscape.



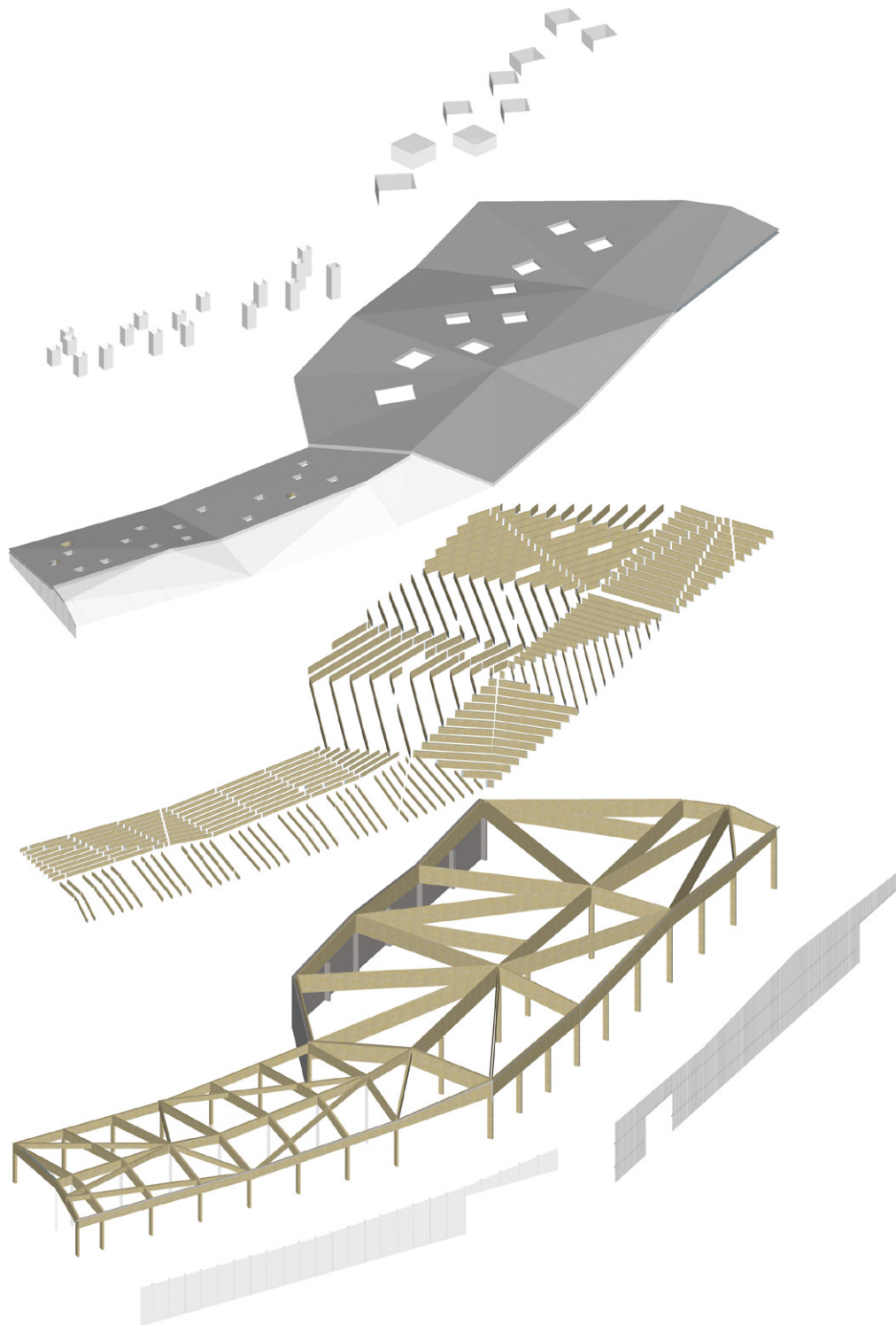
Site view, scale 1:2000, 1:400



1 Floor plan, scale 1:300



Sections, scale 1:300



..... NATURAL LIGHT AND VENTILATION THROUGH THE ROOF
(SKYLIGHTS AND SUN TUNNELS)

..... GLACIER-LIKE ROOF SHAPING (ALUMINIUM SHEETS WITH
SILVER MATT FINISH)

..... SECONDARY ROOF TIMBER CONSTRUCTION

..... PRIMARY TIMBER ROOF CONSTRUCTION;
TIMBER COLUMNS IN ADDITION WITH STEEL ONES
(I-SHAPED), AND A CONCRETE WALL WITH RIBS IN THE TECH-
NICAL PART OF THE OBJECT

..... TRANSPARENT/TRANSLUCENT FACADE USING GLASS PANELS
WITH WHITE COLOR GRADIENT IN COMMUNITY PART AND
POLYCARBONATE PLATES IN THE TECHNICAL PART OF THE
BUILDING

